

KURUKSHETRA

LAYOUT PLAN OF THE JJ COLONY RATGAL IN KHASRA NO. -

7/23, 7/24, 7/25, 8/6 Min, 8/7 Min, 8/8, 8/9, 8/10, 8/11, 8/12, 8/13, 8/14, 8/15, 8/18 Min, 8/19, 8/20, 8/21, 8/22 Min, 9/3 Min, 9/8 Min, 9/9 Min, 9/10 Min, 9/11, 9/12, 9/13 Min, 9/18 Min, 9/19, 9/20 Min, 9/23 Min, 16/1, 16/2 Min, 16/10, 16/11, 16/1 Min.
Of Village Ratgal, 352 Min, 353 Min, 354 Min, 355/1 Min, 355/2 Min, 356/1 Min, 357 Min, 358 Min, 359 Min, 360 Min, 361/1, 362, 363, 364, 365, 366 Min, 367 Min, 368, 369, 370, 371, 372 Min, 373 Min, 374 Min, 375 Min, 376 Min, 377, 378 Min, 379 Min, 380/1 Min, 381 Min, 382 Min, 383 Min Of Village Kheri Markanda

THEMIL THANESAR, (KKR)

FORMAT FOR CAPTURING INFORMATION REGARDING UNAUTHORISED COLONY

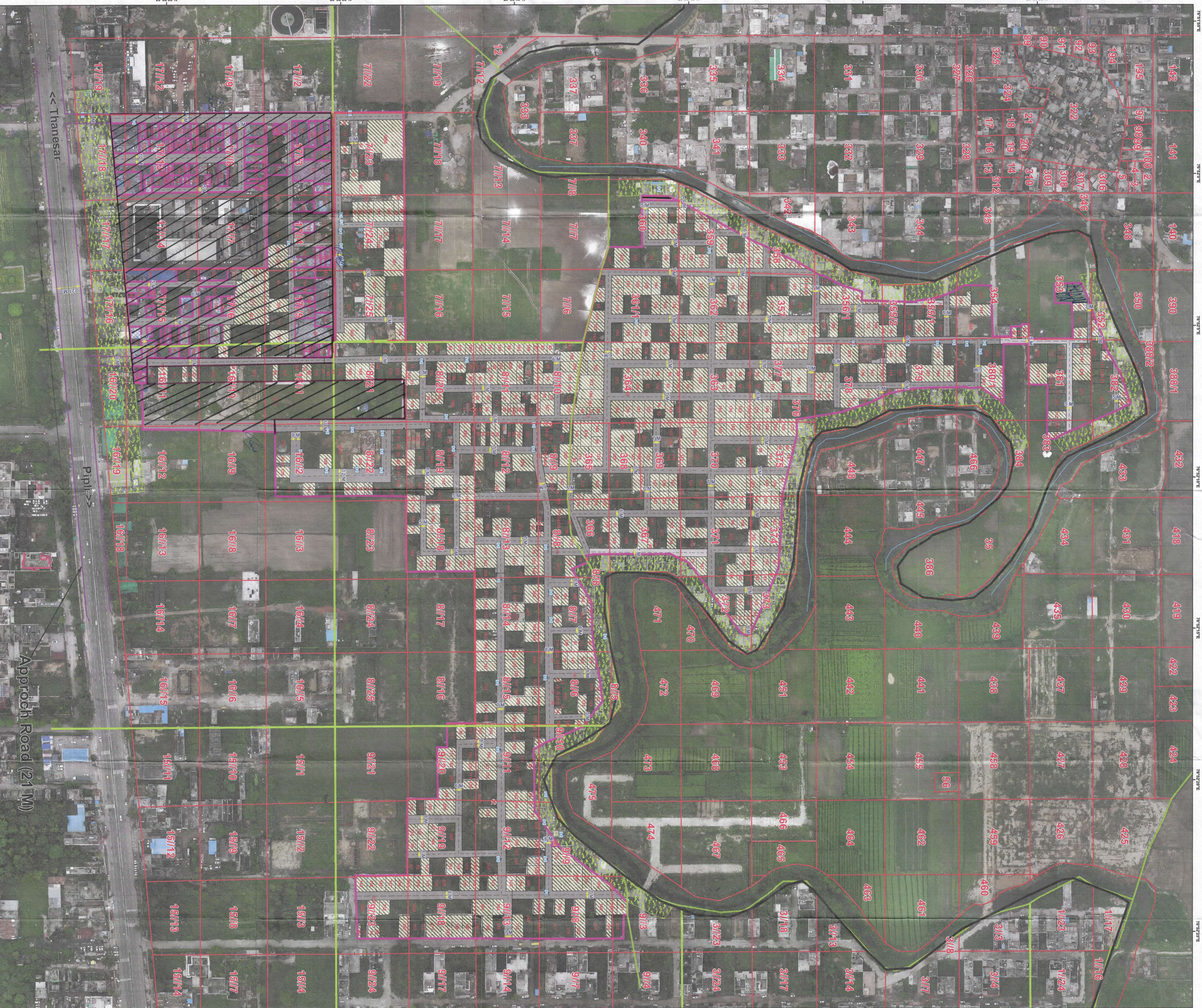
Sr. No.	Parameter Name	Description
1	Colony Name	J J Colony Ratgal
2	Total Surveyed (Area - H ² x 8 acres) - (Commercial Area = acre) + Public Area) = Colony Area	44.28 Acres
3	Location of the colony	On Pipli Road
	(i) Within MC	Yes
	(ii) Outside MC	No
4	Type of Colony and use (in %)	Residential 38.47% Industrial 0.00% Commercial 0.01% Vacant 37.19% Road 22.70% Public & Semi Public 0.01%
5	Controlled Area	Thanesar
6	Urban Area	Kurukshetra
7	Year of establishment	2009
8	Layout Plan (at 1 cm : 10m)	ATTACHED
9	Total Plots	925
10	Constructed Plots (Residential + Commercial+Public)	577
11	Number of vacant plots	358
12	Number of families residing in the colony	577
13	Does the colony have street light?	Partial
14	Does the colony have water supply through pipelines?	Partial
15	Does the colony have underground sewerage facility?	Partial
16	If connected to any external Sewage treatment plant?	No
17	Does the colony have Park or Open space	No
18	Road type on Colony (Kachal/pucca)	Pucca/Kuchcha
19	Width of different roads (in meters)	Road Width 3 - 12 M Length (in mtrs) 6500
20	Minimum Road Width	3 M
21	Approach Road Width	21 M
22	Electricity provided to households through which sub station	Kurukshetra
23	Does the colony have community site	No
24	Area of the community site (in Acres)	Nil
25	Is the RWA registered	No
26	Additional Information, if any	

Drawing No. (KKR)/KURUKSHETRA - 50/2022

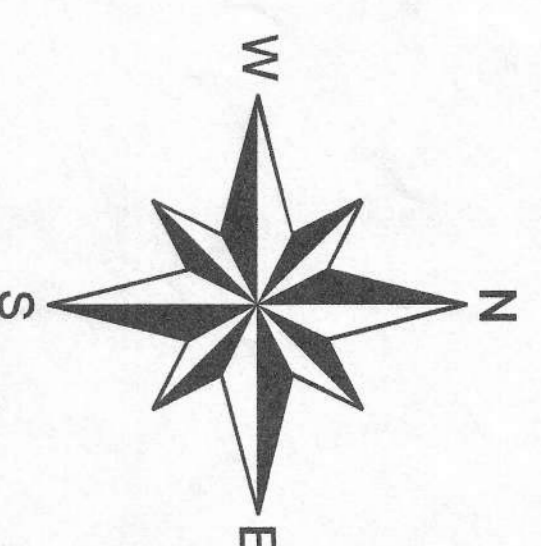
Checked By: *[Signature]*

(BI) *[Signature]* (ME) *[Signature]* (EE) *[Signature]* (ED) *[Signature]*

(DMC/KKR) *[Signature]*



ALL THE DIMENSIONS AND AREA IN METER ONLY



LEGEND

- (a) Manhole/ Chamber
- (b) T/Electric/Mobile Tower
- (c) Street Light/Solar Pole
- (d) School/Hospital/Airport
- (e) Road Centerline
- (f) Revenue Boundary
- (g) HT Line
- (h) Sewerage Line
- (i) Municipal Limit
- (j) Temple/Mosque/Church
- (k) Public & Semi Public Area
- (l) Murabba Line
- (m) Khasra Line
- (n) Kuchcha Road
- (o) Pucca Road
- (p) Colony Boundary
- (q) Built Up Area / Residential
- (r) Commercial Area
- (s) Industrial Area
- (t) Vacant Land
- (u) Drain/Culvert/Bridge
- (v) Road Width
- (w) Approach Road
- (x) Green Belt
- (y) Proposed Road

KEY PLAN

AREA NOT TO BE CONSIDERED

J J Colony Ratgal

MACH 1

MachOne Advisors LLP

M: +91 9318361558, 7506068923

Scale: 1:1300

Size: Checked

Sheet No: Drawn By

Sl. No	Date	Description of Revision	Prints Issued
1			

Client: Municipal Committee Thanesar
 Project: Unauthorized Colony Survey

Survey Consultant: MACH 1
 MachOne Advisors LLP
 M: +91 9318361558, 7506068923

Sanjay Khandu
 P. S. P.
 District Town Planner
 Kurukshetra