

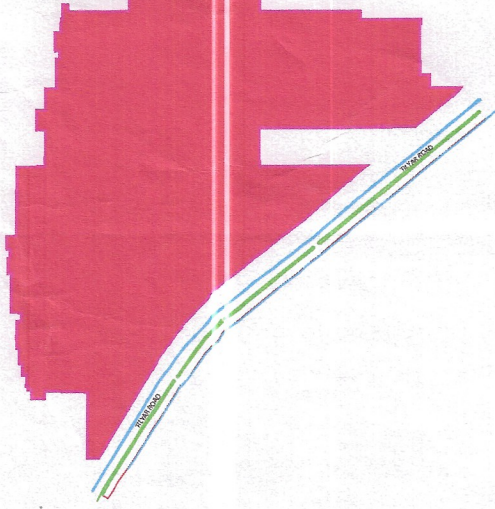
DISTRICT ROHTAK

LAYOUT PLAN OF THE MAS'NATH NAGAR COLONY IN REVENUE ESTATE OF VILLAGE BOHAR TEHSIL AND DISTRICT ROHTAK

IN KHASRA/KILLA NO -

213/6min, 16min, 16min, 24 min, 26
214/1, 5, 8, 11, 12, 13, 14, 15, 16, 17, 18, 19, 20, 21, 22, 23, 24, 25
215/11, 12min, 13min, 18min, 19, 20, 21, 22, 23min, 24min
230/8min, 10min, 11min
231/1, 2, 3, 4, 5, 6, 7, 8, 9, 10, 11, 12, 13, 14 15min, 16min, 17min,
18, 19, 20, 21, 22, 23min
232/6, 6, 7min, 14min, 15, 16, 17min, 21min, 25, 4min
248/4min, 5, 6min, 7min, 15min, 16min
249/1, 2min, 3min, 9min, 10, 11min, 20 min

KEY PLAN



DETAILS OF UNAUTHORIZED COLONY

Sr. No.	Parameter Name	Description
1	Colony name	Mas'Nath Nagar Colony
2	Surveyed Area of Colony	72.33 Acres
2A	Total Area of Colony	65.71 Acres
2B	Green Belt	6.62 Acres
3	Location of the colony	NEAR VILLAGE BOHAR
(i)	Within MC	Yes
(ii)	Outside MC	No
4	Type of Colony and use (in %)	Residential 26.06% Vacant 53.22% Commercial + Road 1.49% + 19.22%
4A	Development Plan Zone	Open Space
5	Controlled Area	Rohtak
6	Urban Area	Rohtak
7	Year of establishment	2014
8	Layout Plan Scale	1:1000
9	Total Plots	1079
10	Constructed Plots (Residential + Commercial + Public)	377 + 17 = 422
11	Number of vacant plots	---
12	Number of families residing in the colony	392
13	Does the colony have street light?	No
14	Does the colony have water supply through pipelines?	No
	Does the colony have underground sewerage facility?	Partly Yes
15	If connected to any external Sewage treatment plant? (Y/N)	No
16	Does the colony have Park or Open space	No
17	Road type on Colony (Kacha/Pucca)	Partly Kuccha/Pucca
18	Width of different roads (in meters)	Road Width Length (in mtr) 3 - 6M 397.03 M 6 - 9 M 995.12 M
19	Minimum Road width	3.5 M
	Total Road area	52,775.61M
20	Electricity provided to households through which sub station	Rohtak
21	Does the colony have community site	No
22	Area of the community site (in acres)	---
23	Is the RWA registered	No
24	Additional information, if any	---

SCALE 1:1000

One inch = 100 M

NORTH

PD CONSULTING ENGINEERS PVT. LTD.

hello@pdcegroup.com www.pdcegroup.com
Red House, Behind MCD School,
Mehrauli-Gurgaon Rd, Gurgaon, Delhi - 30

Checked: PDCE Surveyor: Sudip Patra Sheet No. A0
Drawn By: Rashid Sign: 1 OF 1 Rev No.: R0

NOTE:
ALL DIMENSIONS ARE IN METERS AND AREA - 1 ACRES.

DRG. NO. DTP(R) 11 DATED 14.02.2022 / 17-02-2023

LAYOUT PLAN CHECKED AND VERIFIED AT SITE BY:-

DRG. NO. DTP(R) 13 DATED 14.02.2023

LAYOUT PLAN CHECKED AND VERIFIED AT SITE BY:-

JUNIOR ENG. (ARIT) PATWARI

ASSISTANT DRAFTSMAN (RITU) RITU

JUNIOR DRAFTSMAN (SANJAY) KUMAR

SENIOR DRAFTSMAN (MANISH) DAHYA

PLANNING ASSISTANT (SUMANDEEP)

ASSISTANT TOWN PLANNER

DISTRICT TOWN PLANNER

OFFICE OF DISTRICT TOWN PLANNER, ROHTAK

TOWN & COUNTRY PLANNING DEPT., HARYANA

C.V - Corrected & Verified



This layout plan of unauthorised colony is approved and notified by the Government vide notification no. 04/42/2023 - 2CI dated 25th July, 2023. The same be scanned for uploading on the web portal.

PE

Consultant/PE

ATP

LEGEND

ManHole/ Chamber		Colony Boundary	
Transformer / Electric Pole/ Mobile Tower		HT Line	
Street Light / Solar Pole		Sewerage Line	
Revenue Boundary		Kachcha Road	
City Road		Vacant Land (Not to be Regularised) (Area in Acre)	
Khasra Line		Tin Shed	
Murraba Line			

Public & Semipublic Area (Area in Acre)	SR. NO.	WIDTH OF INTERNAL ROADS	COLOUR
Commercial Area	1.	UPTO 1.5 MTR.	
Residential Area	2.	1.5 TO 2.0 MTR.	
Industrial Area	3.	2.0 TO 2.5 MTR.	
Drain / Culvert / Bridge	4.	2.5 TO 3.0 MTR.	
Pucca Road	5.	3.0 TO 6.0 MTR.	
Temple/Mosque/Church/Flag Post/Sewa Sansthan	6.	6.0 TO 9.0 MTR.	
Statue/School/Airport/Hospital/Well	7.	ABOVE 9.0 MTR.	

LEGEND

SR. NO.	ROAD WIDENING & GREEN BELT	COLOUR
1.	ROAD WIDENING SHOWN THUS	
2.	GREEN BELT SHOWN THUS	

Fire Officer
ROHTAK

Commissioner,
Municipal Corporation,
ROHTAK

Commissioner,
Municipal Corporation,
ROHTAK

Commissioner,
Municipal Corporation,
ROHTAK

Commissioner,
Municipal Corporation,
ROHTAK

Commissioner,
Municipal Corporation,
ROHTAK

Commissioner,
Municipal Corporation,
ROHTAK

Commissioner,
Municipal Corporation,
ROHTAK

Commissioner,
Municipal Corporation,
ROHTAK

Commissioner,
Municipal Corporation,
ROHTAK

Commissioner,
Municipal Corporation,
ROHTAK

Commissioner,
Municipal Corporation,
ROHTAK

Commissioner,
Municipal Corporation,
ROHTAK

Commissioner,
Municipal Corporation,
ROHTAK

Commissioner,
Municipal Corporation,
ROHTAK

Commissioner,
Municipal Corporation,
ROHTAK

Commissioner,
Municipal Corporation,
ROHTAK

Commissioner,
Municipal Corporation,
ROHTAK

Commissioner,
Municipal Corporation,
ROHTAK

Commissioner,
Municipal Corporation,
ROHTAK

Commissioner,
Municipal Corporation,
ROHTAK

Commissioner,
Municipal Corporation,
ROHTAK

Commissioner,
Municipal Corporation,
ROHTAK

Commissioner,
Municipal Corporation,
ROHTAK

Commissioner,
Municipal Corporation,
ROHTAK

Commissioner,
Municipal Corporation,
ROHTAK

Commissioner,
Municipal Corporation,
ROHTAK

Commissioner,
Municipal Corporation,
ROHTAK

Commissioner,
Municipal Corporation,
ROHTAK

Commissioner,
Municipal Corporation,
ROHTAK

Commissioner,
Municipal Corporation,
ROHTAK

Commissioner,
Municipal Corporation,
ROHTAK

Commissioner,
Municipal Corporation,
ROHTAK