

## MUNICIPAL CORPORATION GURUGRAM

# SURVEY OF UN-AUTHORISED COLONY - THE NKV FARM COLONY

LAYOUT PLAN OF 7967-THE NKV FARM COLONY  
(AS PER RWA VAISHNAV ENCLAVE)  
IN KHASRA NO 2411/154 TO 2411/210  
2411/154, 2411/155, 2411/156, 2411/157, 2411/158, 2411/159, 2411/160, 2411/161, 2411/162, 2411/163, 2411/164, 2411/165, 2411/166, 2411/167, 2411/168, 2411/169, 2411/170, 2411/171, 2411/172, 2411/173, 2411/174, 2411/175, 2411/176, 2411/177, 2411/178, 2411/179, 2411/180, 2411/181, 2411/182, 2411/183, 2411/184, 2411/185, 2411/186, 2411/187, 2411/188, 2411/189, 2411/190, 2411/191, 2411/192, 2411/193, 2411/194, 2411/195, 2411/196, 2411/197, 2411/198, 2411/199, 2411/200, 2411/201, 2411/202, 2411/203, 2411/204, 2411/205, 2411/206, 2411/207, 2411/208, 2411/209, 2411/210.

### FORM FOR CAPTURING INFORMATION REGARDING UNAUTHORISED COLONY

Sr. No.	Parameter Name	Description
1	Colony name	THE NKV FARM COLONY
2	Area	20.538 ACRES
3	Location of the colony	ON JAIL ROAD
	(i) Within MC	Yes
	(ii) Outside MC	No
4	Type of Colony and use (in %)	Residential (28.87%), Vacant (48.02%), Road (23.08%)
5	Controlled Area	Controlled area around Abadi Naya Green revenue estate of village Bhandari GURUGRAM
6	Urban Area	2018
7	Year of establishment	2018
8	Layout Plan (at 1 cm : 10m)	To be Attached (Note: separate guidelines for layout attached for reference)
9	Total Plots	560
10	Constructed Plots (Residential)	306
11	Number of vacant plots	254
12	Number of families residing in the colony	212
13	Does the colony have street light?	YES
14	Does the colony have water supply through pipeline?	Yes
15	Does the colony have underground sewerage facility?	No
16	If connected to any external Sewage treatment plant? (YN)	No
17	Does the colony have Park or Open space	No
18	Road type on Colony (each/pucca)	Kuccha
19	Width of different roads (in meters)	3.0 M
20	Minimum Road width Electricity provided to households through which sub station	BHANDI NAYA GREEN
21	Does the colony have community site	No
22	Area of the community site (in acres)	000
23	Is the RWA registered	000
24	Zone as per section of 67(1), GURUGRAM	YES
25	Additional information, if any	AGRICULTURE ZONE.

REMARKS- The Original survey boundary received from DUES (CTP), GGGM has been re-checked as per the Residential houses to maintain the Configuration of the colony.

MUNICIPAL CORPORATION GURUGRAM

JE (FIELD) PATWARI (PLANNING OFFICIAL)

NT, MCG

ATP, MCG

DNO, MCG

COMMISSIONER, MCG

PA

HDM

DTP (MCG)

STP (MCG)

PA

DTP (P), GGGM

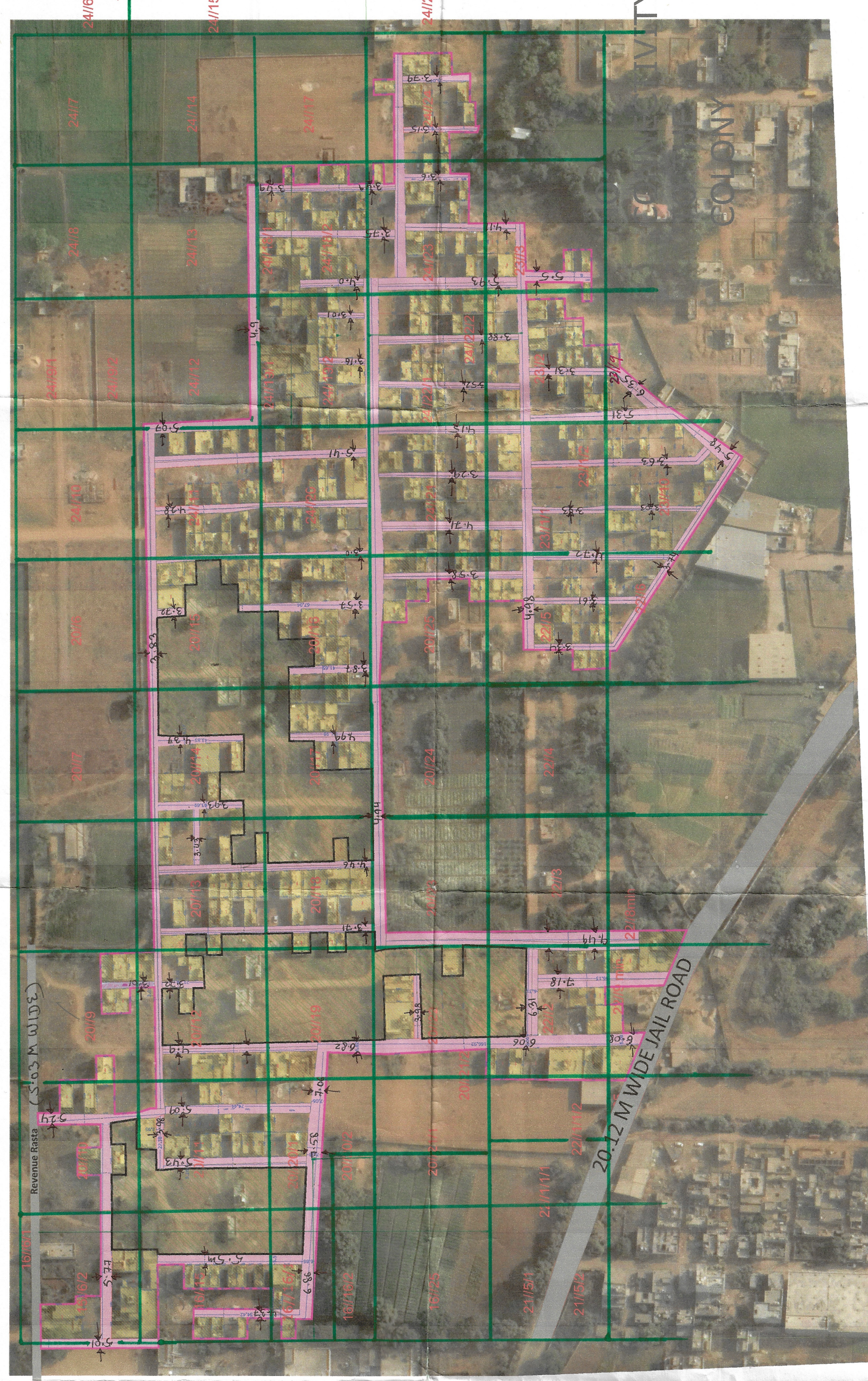
CTP (MCG)

CTP (MCG)

DIV. COMMISSIONER, GGGM

This layout plan of unauthorised colony is approved and notified by the Government vide notification no. 04/42/2023 - 2CI dated 6<sup>th</sup> October, 2023. The same be scanned for uploading on the web portal.

*[Signatures]*  
Consultant/PE  
ATP



AMBABANI FARMHOUSE & DEVELOPERS PVT. LTD.  
AranKuma  
9716073660  
DIRECTOR  
9716073660  
9716073660  
9716073660  
9716073660  
9716073660  
9716073660  
9716073660  
9716073660

SIGNATURES OF RWA/PLOT OWNERS/REPRESENTATIVES/ MEMBERS OF THE COLONY.

MCG  
MUNICIPAL CORPORATION of GURUGRAM  
NURTURING GURUGRAM  
ADDRESS:- PLOT NO. C1, INFOCTY-4, SEC-34, GURUGRAM