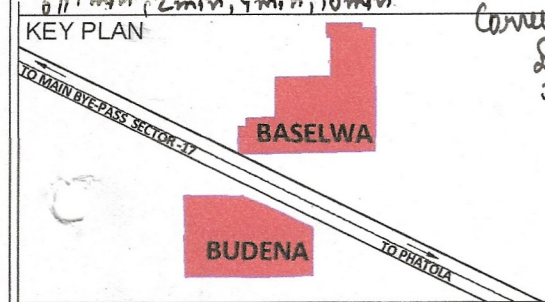


Correction Needed  
 Colony boundary as 220kV  
 HT line R Area: (54) -2R-

**DISTRICT FARIDABAD**

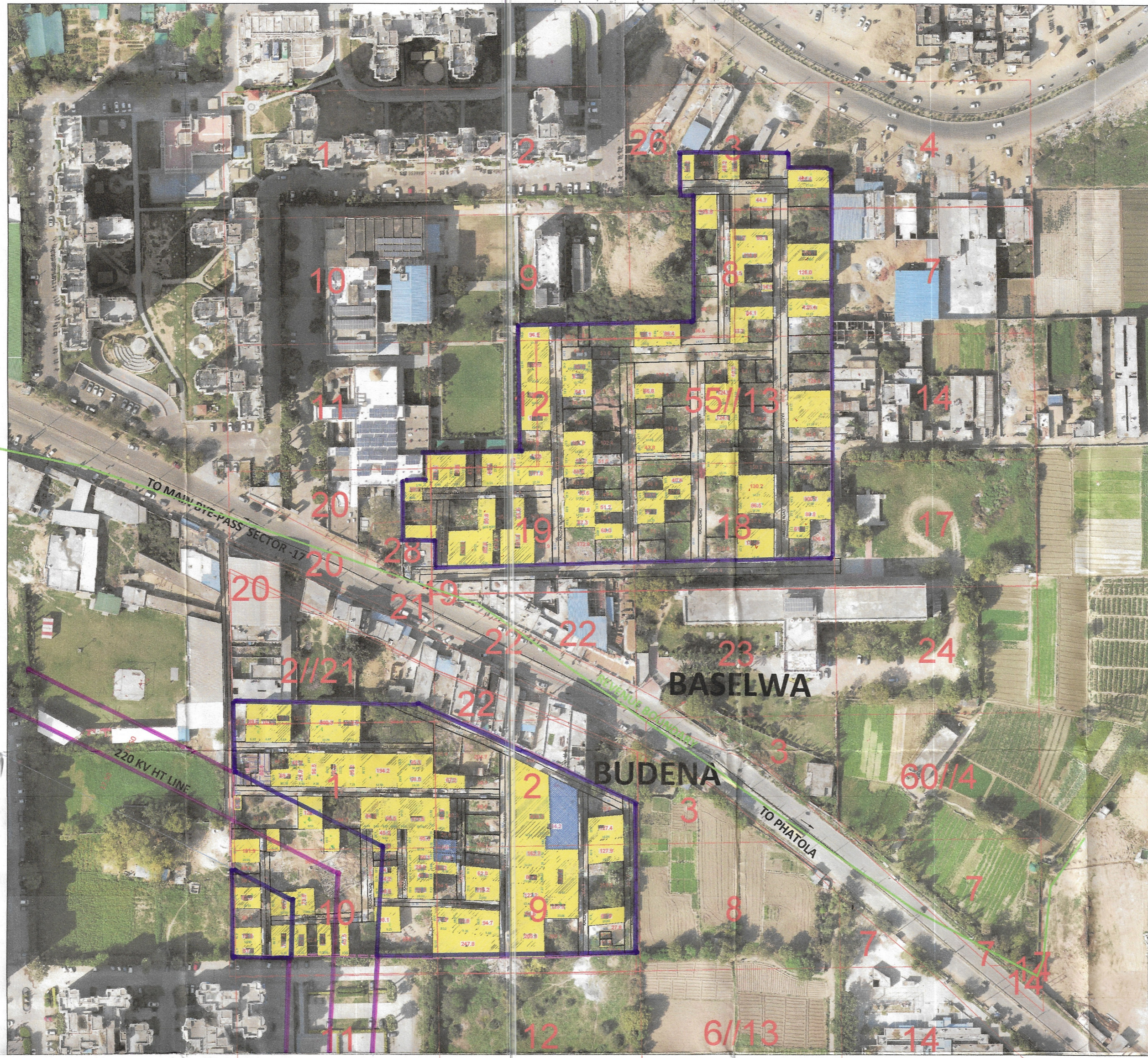
LAYOUT PLAN OF UNNAMED COLONY ID-7337 IN THE REVENUE ESTATE OF VILLAGE BASELWA & BUDENA, TEHSIL-FARIDABAD, DISTRICT-FARIDABAD COMPRISING BASELWA IN KHASRA NO.:- 55/13, 55/14, 55/15, 55/16, 55/17, 55/18, 55/19, 55/20, 55/21, 55/22, 55/23, 55/24, 55/25, 55/26, 55/27, 55/28, 55/29, 55/30, 55/31, 55/32, 55/33, 55/34, 55/35, 55/36, 55/37, 55/38, 55/39, 55/40, 55/41, 55/42, 55/43, 55/44, 55/45, 55/46, 55/47, 55/48, 55/49, 55/50, 55/51, 55/52, 55/53, 55/54, 55/55, 55/56, 55/57, 55/58, 55/59, 55/60, 55/61, 55/62, 55/63, 55/64, 55/65, 55/66, 55/67, 55/68, 55/69, 55/70, 55/71, 55/72, 55/73, 55/74, 55/75, 55/76, 55/77, 55/78, 55/79, 55/80, 55/81, 55/82, 55/83, 55/84, 55/85, 55/86, 55/87, 55/88, 55/89, 55/90, 55/91, 55/92, 55/93, 55/94, 55/95, 55/96, 55/97, 55/98, 55/99, 55/100, 55/101, 55/102, 55/103, 55/104, 55/105, 55/106, 55/107, 55/108, 55/109, 55/110, 55/111, 55/112, 55/113, 55/114, 55/115, 55/116, 55/117, 55/118, 55/119, 55/120, 55/121, 55/122, 55/123, 55/124, 55/125, 55/126, 55/127, 55/128, 55/129, 55/130, 55/131, 55/132, 55/133, 55/134, 55/135, 55/136, 55/137, 55/138, 55/139, 55/140, 55/141, 55/142, 55/143, 55/144, 55/145, 55/146, 55/147, 55/148, 55/149, 55/150, 55/151, 55/152, 55/153, 55/154, 55/155, 55/156, 55/157, 55/158, 55/159, 55/160, 55/161, 55/162, 55/163, 55/164, 55/165, 55/166, 55/167, 55/168, 55/169, 55/170, 55/171, 55/172, 55/173, 55/174, 55/175, 55/176, 55/177, 55/178, 55/179, 55/180, 55/181, 55/182, 55/183, 55/184, 55/185, 55/186, 55/187, 55/188, 55/189, 55/190, 55/191, 55/192, 55/193, 55/194, 55/195, 55/196, 55/197, 55/198, 55/199, 55/200, 55/201, 55/202, 55/203, 55/204, 55/205, 55/206, 55/207, 55/208, 55/209, 55/210, 55/211, 55/212, 55/213, 55/214, 55/215, 55/216, 55/217, 55/218, 55/219, 55/220, 55/221, 55/222, 55/223, 55/224, 55/225, 55/226, 55/227, 55/228, 55/229, 55/230, 55/231, 55/232, 55/233, 55/234, 55/235, 55/236, 55/237, 55/238, 55/239, 55/240, 55/241, 55/242, 55/243, 55/244, 55/245, 55/246, 55/247, 55/248, 55/249, 55/250, 55/251, 55/252, 55/253, 55/254, 55/255, 55/256, 55/257, 55/258, 55/259, 55/260, 55/261, 55/262, 55/263, 55/264, 55/265, 55/266, 55/267, 55/268, 55/269, 55/270, 55/271, 55/272, 55/273, 55/274, 55/275, 55/276, 55/277, 55/278, 55/279, 55/280, 55/281, 55/282, 55/283, 55/284, 55/285, 55/286, 55/287, 55/288, 55/289, 55/290, 55/291, 55/292, 55/293, 55/294, 55/295, 55/296, 55/297, 55/298, 55/299, 55/300, 55/301, 55/302, 55/303, 55/304, 55/305, 55/306, 55/307, 55/308, 55/309, 55/310, 55/311, 55/312, 55/313, 55/314, 55/315, 55/316, 55/317, 55/318, 55/319, 55/320, 55/321, 55/322, 55/323, 55/324, 55/325, 55/326, 55/327, 55/328, 55/329, 55/330, 55/331, 55/332, 55/333, 55/334, 55/335, 55/336, 55/337, 55/338, 55/339, 55/340, 55/341, 55/342, 55/343, 55/344, 55/345, 55/346, 55/347, 55/348, 55/349, 55/350, 55/351, 55/352, 55/353, 55/354, 55/355, 55/356, 55/357, 55/358, 55/359, 55/360, 55/361, 55/362, 55/363, 55/364, 55/365, 55/366, 55/367, 55/368, 55/369, 55/370, 55/371, 55/372, 55/373, 55/374, 55/375, 55/376, 55/377, 55/378, 55/379, 55/380, 55/381, 55/382, 55/383, 55/384, 55/385, 55/386, 55/387, 55/388, 55/389, 55/390, 55/391, 55/392, 55/393, 55/394, 55/395, 55/396, 55/397, 55/398, 55/399, 55/400, 55/401, 55/402, 55/403, 55/404, 55/405, 55/406, 55/407, 55/408, 55/409, 55/410, 55/411, 55/412, 55/413, 55/414, 55/415, 55/416, 55/417, 55/418, 55/419, 55/420, 55/421, 55/422, 55/423, 55/424, 55/425, 55/426, 55/427, 55/428, 55/429, 55/430, 55/431, 55/432, 55/433, 55/434, 55/435, 55/436, 55/437, 55/438, 55/439, 55/440, 55/441, 55/442, 55/443, 55/444, 55/445, 55/446, 55/447, 55/448, 55/449, 55/450, 55/451, 55/452, 55/453, 55/454, 55/455, 55/456, 55/457, 55/458, 55/459, 55/460, 55/461, 55/462, 55/463, 55/464, 55/465, 55/466, 55/467, 55/468, 55/469, 55/470, 55/471, 55/472, 55/473, 55/474, 55/475, 55/476, 55/477, 55/478, 55/479, 55/480, 55/481, 55/482, 55/483, 55/484, 55/485, 55/486, 55/487, 55/488, 55/489, 55/490, 55/491, 55/492, 55/493, 55/494, 55/495, 55/496, 55/497, 55/498, 55/499, 55/500, 55/501, 55/502, 55/503, 55/504, 55/505, 55/506, 55/507, 55/508, 55/509, 55/510, 55/511, 55/512, 55/513, 55/514, 55/515, 55/516, 55/517, 55/518, 55/519, 55/520, 55/521, 55/522, 55/523, 55/524, 55/525, 55/526, 55/527, 55/528, 55/529, 55/530, 55/531, 55/532, 55/533, 55/534, 55/535, 55/536, 55/537, 55/538, 55/539, 55/540, 55/541, 55/542, 55/543, 55/544, 55/545, 55/546, 55/547, 55/548, 55/549, 55/550, 55/551, 55/552, 55/553, 55/554, 55/555, 55/556, 55/557, 55/558, 55/559, 55/560, 55/561, 55/562, 55/563, 55/564, 55/565, 55/566, 55/567, 55/568, 55/569, 55/570, 55/571, 55/572, 55/573, 55/574, 55/575, 55/576, 55/577, 55/578, 55/579, 55/580, 55/581, 55/582, 55/583, 55/584, 55/585, 55/586, 55/587, 55/588, 55/589, 55/590, 55/591, 55/592, 55/593, 55/594, 55/595, 55/596, 55/597, 55/598, 55/599, 55/600, 55/601, 55/602, 55/603, 55/604, 55/605, 55/606, 55/607, 55/608, 55/609, 55/610, 55/611, 55/612, 55/613, 55/614, 55/615, 55/616, 55/617, 55/618, 55/619, 55/620, 55/621, 55/622, 55/623, 55/624, 55/625, 55/626, 55/627, 55/628, 55/629, 55/630, 55/631, 55/632, 55/633, 55/634, 55/635, 55/636, 55/637, 55/638, 55/639, 55/640, 55/641, 55/642, 55/643, 55/644, 55/645, 55/646, 55/647, 55/648, 55/649, 55/650, 55/651, 55/652, 55/653, 55/654, 55/655, 55/656, 55/657, 55/658, 55/659, 55/660, 55/661, 55/662, 55/663, 55/664, 55/665, 55/666, 55/667, 55/668, 55/669, 55/670, 55/671, 55/672, 55/673, 55/674, 55/675, 55/676, 55/677, 55/678, 55/679, 55/680, 55/681, 55/682, 55/683, 55/684, 55/685, 55/686, 55/687, 55/688, 55/689, 55/690, 55/691, 55/692, 55/693, 55/694, 55/695, 55/696, 55/697, 55/698, 55/699, 55/700, 55/701, 55/702, 55/703, 55/704, 55/705, 55/706, 55/707, 55/708, 55/709, 55/710, 55/711, 55/712, 55/713, 55/714, 55/715, 55/716, 55/717, 55/718, 55/719, 55/720, 55/721, 55/722, 55/723, 55/724, 55/725, 55/726, 55/727, 55/728, 55/729, 55/730, 55/731, 55/732, 55/733, 55/734, 55/735, 55/736, 55/737, 55/738, 55/739, 55/740, 55/741, 55/742, 55/743, 55/744, 55/745, 55/746, 55/747, 55/748, 55/749, 55/750, 55/751, 55/752, 55/753, 55/754, 55/755, 55/756, 55/757, 55/758, 55/759, 55/760, 55/761, 55/762, 55/763, 55/764, 55/765, 55/766, 55/767, 55/768, 55/769, 55/770, 55/771, 55/772, 55/773, 55/774, 55/775, 55/776, 55/777, 55/778, 55/779, 55/780, 55/781, 55/782, 55/783, 55/784, 55/785, 55/786, 55/787, 55/788, 55/789, 55/790, 55/791, 55/792, 55/793, 55/794, 55/795, 55/796, 55/797, 55/798, 55/799, 55/800, 55/801, 55/802, 55/803, 55/804, 55/805, 55/806, 55/807, 55/808, 55/809, 55/810, 55/811, 55/812, 55/813, 55/814, 55/815, 55/816, 55/817, 55/818, 55/819, 55/820, 55/821, 55/822, 55/823, 55/824, 55/825, 55/826, 55/827, 55/828, 55/829, 55/830, 55/831, 55/832, 55/833, 55/834, 55/835, 55/836, 55/837, 55/838, 55/839, 55/840, 55/841, 55/842, 55/843, 55/844, 55/845, 55/846, 55/847, 55/848, 55/849, 55/850, 55/851, 55/852, 55/853, 55/854, 55/855, 55/856, 55/857, 55/858, 55/859, 55/860, 55/861, 55/862, 55/863, 55/864, 55/865, 55/866, 55/867, 55/868, 55/869, 55/870, 55/871, 55/872, 55/873, 55/874, 55/875, 55/876, 55/877, 55/878, 55/879, 55/880, 55/881, 55/882, 55/883, 55/884, 55/885, 55/886, 55/887, 55/888, 55/889, 55/890, 55/891, 55/892, 55/893, 55/894, 55/895, 55/896, 55/897, 55/898, 55/899, 55/900, 55/901, 55/902, 55/903, 55/904, 55/905, 55/906, 55/907, 55/908, 55/909, 55/910, 55/911, 55/912, 55/913, 55/914, 55/915, 55/916, 55/917, 55/918, 55/919, 55/920, 55/921, 55/922, 55/923, 55/924, 55/925, 55/926, 55/927, 55/928, 55/929, 55/930, 55/931, 55/932, 55/933, 55/934, 55/935, 55/936, 55/937, 55/938, 55/939, 55/940, 55/941, 55/942, 55/943, 55/944, 55/945, 55/946, 55/947, 55/948, 55/949, 55/950, 55/951, 55/952, 55/953, 55/954, 55/955, 55/956, 55/957, 55/958, 55/959, 55/960, 55/961, 55/962, 55/963, 55/964, 55/965, 55/966, 55/967, 55/968, 55/969, 55/970, 55/971, 55/972, 55/973, 55/974, 55/975, 55/976, 55/977, 55/978, 55/979, 55/980, 55/981, 55/982, 55/983, 55/984, 55/985, 55/986, 55/987, 55/988, 55/989, 55/990, 55/991, 55/992, 55/993, 55/994, 55/995, 55/996, 55/997, 55/998, 55/999, 55/1000



Sr. No.	Parameter Name	Description	
1	Colony name	UNNAMED COLONY (ID-7337)	
2	Area	7.9	
3	Location of the colony	NEAR BMT SCHOOL	
4	(i) Within MC	Yes	
	(ii) Outside MC	No	
4	Type of Colony and use (in %)	Residential	37.29%
		Industrial	0.62%
		Commercial	1.24%
5	Controlled Area	CONTROLLED AREA AROUND OLD FARIDABAD EAST OF AGRA CANAL PART-I DATED 02/05/1985	
6	Urban Area	Faridabad	
7	Year of establishment	2016	
8	Layout Plan (Scale)	1:1000	
9	Total Plots	---	
10	Constructed Plots (Residential+Industrial)	125(R)+(3I)+2(1)=134	
11	Number of vacant plots	---	
12	Number of families residing in the colony	129	
13	Does the colony have Electricity?	Yes	
14	Does the colony have water supply through pipelines?	No	
15	Does the colony have underground sewerage facility?	No	
15	If connected to any external Sewage treatment plant? (Y/N)	No	
16	Does the colony have Park or Open space	NA	
17	Road type on Colony (kacha/pucca)	KACCHA	
18	Width Of Different roads (in meters)	Road Width	Length (in mtrs)
		3.00M	21.59M
		3.50M	90.31M
		4.00M	293.76M
		4.50M	80.62M
		5.00M	303.48M
19	Minimum Road width	3.00M	---
		3.50M	---
		4.00M	---
		4.50M	---
20	Electricity provided to households through which sub station	OLD FARIDABAD	
21	Does the colony have community site	No	
22	Area of the community site (in acres)	Nil	
23	Is the RWA registered	NA	
24	Additional Information, if any	---	

Correction verified  
 Suburb JE MCP

64.22  
 316.08  
 1135.04  
 365.39  
 1517.4  
 5234.63  
 6600.29  
 404685  
 129  
 Acres



Total area - 7.179 acres  
 Built up Area - 2.90 acres  
 (40.39%)  
 Area under roads = 1.63 acres  
 Vacant Area = 2.649 acres  
 (36.90%)  
 Road length  
 0-3m = Nil  
 3m-6m = 913.6m  
 6m-9m = 408.69m  
 Note - Area under 220kV HT Line  
 = 0.688 acres  
 (Revenue estate of village Budena)

Patwari: [Signature]  
 Kanugo: [Signature]  
 SR. ARCH: [Signature]

D.M: [Signature]  
 J.E: [Signature]  
 DTP: [Signature]

CTP: [Signature]  
 CMC: [Signature]  
 DIV.CMC: [Signature]

SCALE 1:1000

DRONE SURVEY AND LAYOUT PLAN PREPARED BY:-  
 PD CONSULTING ENGINEERS PVT.LTD

PDCE GROUP  
 TRANSFORMING QUALITY & BUDGET  
 hello@pdcegroup.com  
 Red House, Behind MCD School,  
 Mehrauli-Gurgaon Rd, Ghitorni, Delhi - 30

Checked: PDCE Surveyor: RISHI PAL Sheet: AO  
 Drawn By: SHUBHAM Sht. No.: 1 OF 1 ID-7337

DRG. NO. DTP(E)-FBD/2022/ DATED

LAYOUT PLAN CHECKED AND VERIFIED AT SITE BY:-  
 PATWARI

JUNIOR ENGG. [Signature]  
 ASSISTANT TOWN PLANNER [Signature]  
 DISTRICT TOWN PLANNER (E) [Signature]  
 SENIOR TOWN PLANNER [Signature]  
 OFFICE-DISTRICT TOWN PLANNER(ENF), FARIDABAD  
 TOWN & COUNTRY PLANNING DEPTT., HARYANA

LEGEND		Commercial Area	Industrial Area	Divider Road
Murraba Line	[Symbol]	[Symbol]	[Symbol]	[Symbol]
Manhole/ Chamber	[Symbol]	Built Up Area/Residential	Vacant Plot (Not to be Regularised)	Temple/Mosque/Church/Flag Post
TF/Electric/Mobile tower	[Symbol]	Vacant Land/Plot	Public & Semipublic Area	Statue/School/Airport/Hospital/Well
Street Light/Solar pole	[Symbol]	HT Line	Pacca Road	Tin Shed
Revenue Boundary	[Symbol]	Drain/Culvert / Bridge		
City Road	[Symbol]	Kaccha Road		
		Water Supply Line		

This layout plan of unauthorised colony is approved and notified by the Government vide notification no. 04/42/2023 - 2CI dated 25<sup>th</sup> July, 2023. The same be scanned for uploading on the web portal.

[Signature] Consultant/PE  
 [Signature] ATP