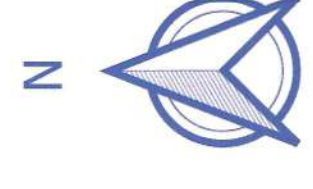


Layout Plan Of Drone Based Survey
Arjun Nagar Extension-I (Kathal)

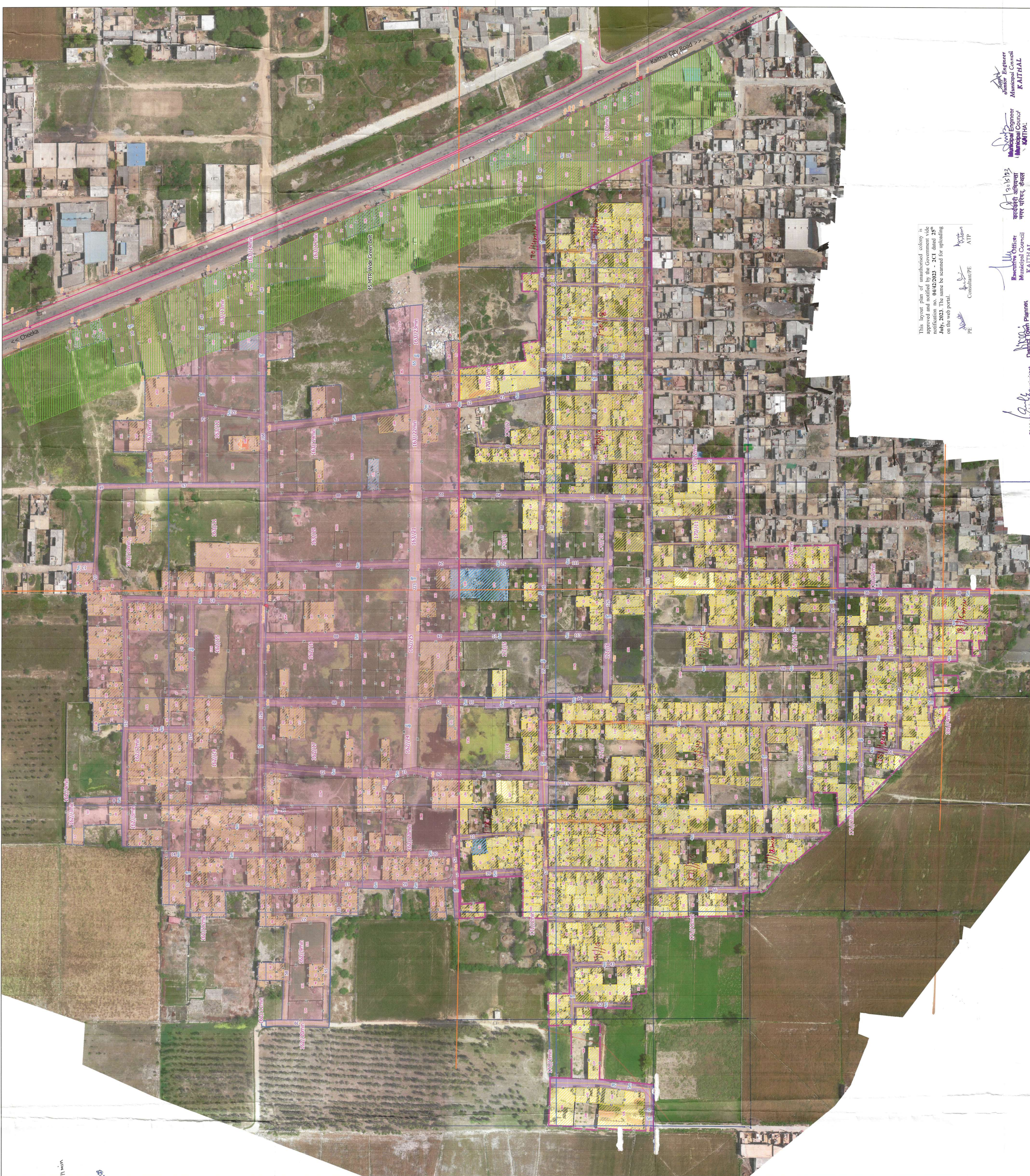


Legend

Colony Boundary	Major Road Line	Electric Pole	Temple	Transformer	Drainage	HT Line	Murabba Line	Area Not To Consider For Notification	Green Belt	Khasra No	Internal Road Polygon	3.0 TO 6.0 MTR Internal Road	2.0 TO 2.5 MTR Internal Road	Commercial	Residential	Vacant	Satellite Image
-----------------	-----------------	---------------	--------	-------------	----------	---------	--------------	---------------------------------------	------------	-----------	-----------------------	------------------------------	------------------------------	------------	-------------	--------	-----------------

LEGEND OF INTERNAL ROAD IN COLONY

WIDTH OF INTERNAL ROAD	LENGTH
UP TO 1.5 MTR	0
1.5 TO 2.0 MTR	0
2.0 TO 2.5 MTR	174
2.5 TO 3.0 MTR	0
3.0 TO 6.0 MTR	4159
6.0 TO 9.0 MTR	0
ABOVE 9.0 MTR	0

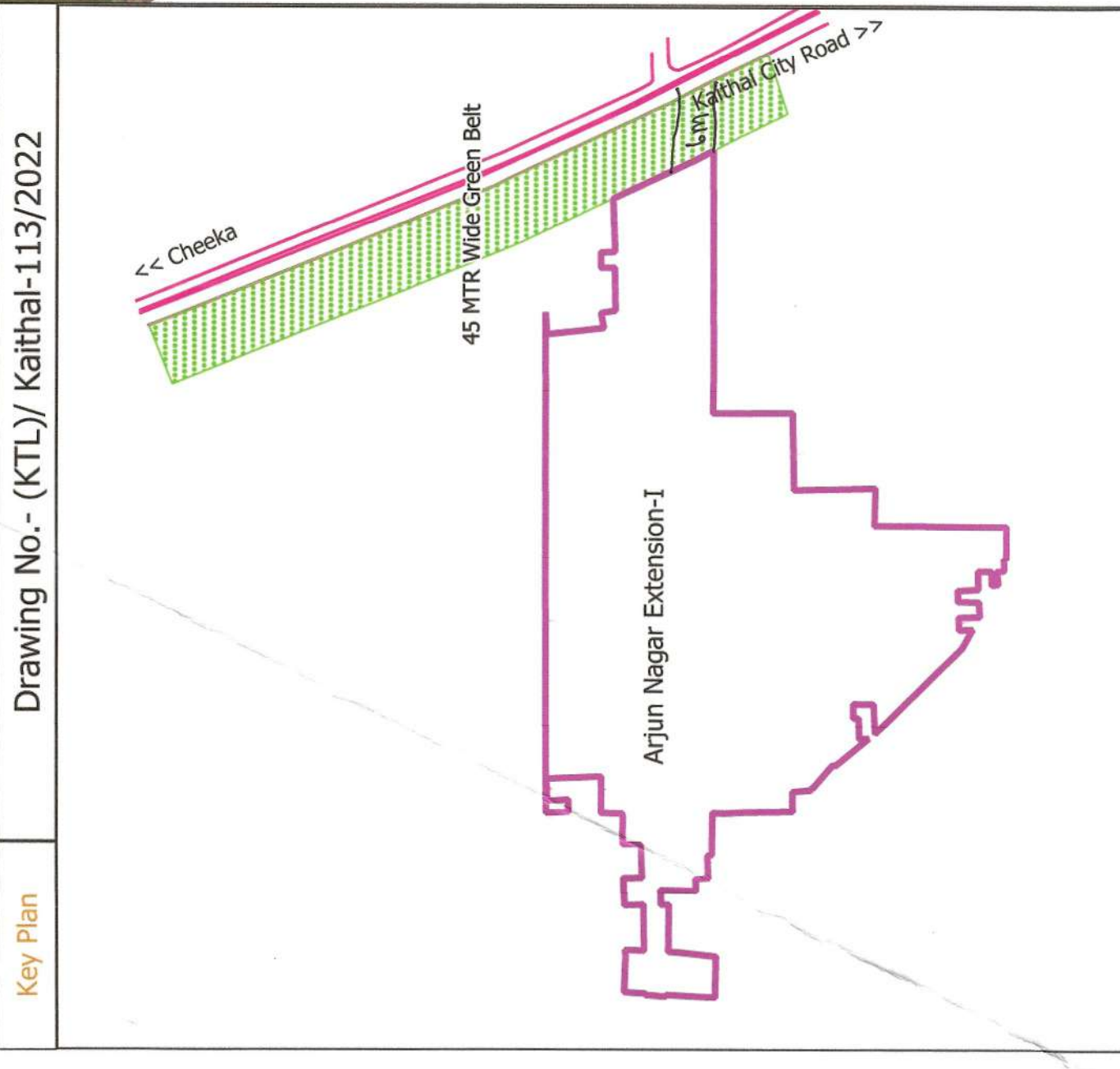


This layout plan of unauthorised colony is approved and notified by the Government vide notification no. 0422903 - 201 dated 25th 03/2022. The same is to be implemented on the spot portal.

District Municipal Engineer, Kathal
Executive Officer, Municipal Council, Kathal
Assistant Engineer, Municipal Council, Kathal
Assistant Engineer, Municipal Council, Kathal
Assistant Engineer, Municipal Council, Kathal
Assistant Engineer, Municipal Council, Kathal



Sr. Parameter Name	Description
1 Colony Name	Arjun Nagar Extension-I
2 Total Survey Area Of Colony	43.02 Acre
2(a) Area Out Of MC Limit	(-) 17.46 Acre
2(b) Area Under Green Belt Land	(-) 2.83 Acre
2(c) Area Under Road Widening Land	Nil
2(d) Area Remain For Notification 170/14/4	22.63 Acre
170/12, 170/3mm, 170/4mm, 170/7, 170/8, 170/9, 170/10, 170/11, 170/12, 170/13, 170/14, 170/15, 170/16, 170/17, 170/18, 170/19, 170/20, 170/21, 170/22, 170/23, 170/24, 170/25, 170/26, 170/27, 170/28, 170/29, 170/30, 170/31, 170/32, 170/33, 170/34, 170/35, 170/36, 170/37, 170/38, 170/39, 170/40, 170/41, 170/42, 170/43, 170/44, 170/45, 170/46, 170/47, 170/48, 170/49, 170/50, 170/51, 170/52, 170/53, 170/54, 170/55, 170/56, 170/57, 170/58, 170/59, 170/60, 170/61, 170/62, 170/63, 170/64, 170/65, 170/66, 170/67, 170/68, 170/69, 170/70, 170/71, 170/72, 170/73, 170/74, 170/75, 170/76, 170/77, 170/78, 170/79, 170/80, 170/81, 170/82, 170/83, 170/84, 170/85, 170/86, 170/87, 170/88, 170/89, 170/90, 170/91, 170/92, 170/93, 170/94, 170/95, 170/96, 170/97, 170/98, 170/99, 170/100	
3 Location Of Colony	Kathal-Checha Panchayat (i) Within MC (ii) Outside MC (iii) Residential Zone
4 (a) Development Plan Zone	Residential Zone
5 Controlled Area	Kathal
6 Urban Area	Kathal
7 Year of establishment	2002
8 Layout Plan (at 1 cm : 14 m)	Attached
9 Total Plots (Residential+Commercial+Vacant)	513+2+130=645
10 Constructed Plots	515
11 Number of vacant plots	130
12 Number of families residing in the colony	513
13 Does the colony have street light?	No
14 Does the colony have water supply through pipelines?	Yes
15 Does the colony have underground sewage treatment plant?	Partially
16 Is the colony connected to any external sewage treatment plant?	No
17 Does the colony have Park or Open space?	No
18 Road type on Colony (Kaccha/Pucca)	Kaccha/Pucca
19 Width of different roads (In Mtrs)	Road Width Length (In mtrs)
Road width	2.0 m to 6 m 4373 MTR
20 Minimum Road width	2.0 m
21 Electricity provided to households through	Kathal
22 Does the colony have community site (In Acres)	Nil
23 Is the RWA registered	No
24 Drainage	No
25 Revenue Basts	No
26 Additional Information, if any	-



Drawing No.- (KTL)/Kathal-113/2022