

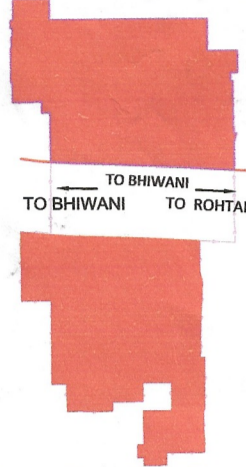
To be checked

DISTRICT ROHTAK

LAYOUT PLAN OF KHATIAN WALA MOHALLA EXTN. & JAT COLONY EXTN. SITUATED AT ROHTAK BHIWANI ROAD IN THE REVENUE ESTATE KALANAU KHURD TEHSIL KALANAU AND DISTRICT ROHTAK

COMPRISING KHASRA NO. :-
 57// 19, 20, 21, 22, 23min, 24min
 58// 11min, 12min, 16, 17, 18, 19, 20min, 21min, 22, 23, 24, 25
 59// 1min, 2, 3, 4, 5, 6, 7, 8, 12min, 14min, 15min
 76// 1, 2, 3min, 10min
 80// 10min, 11min, 12min, 13min
 98// 6min, 7min, 8min, 15min, 16min, 17min, 18min, 19min, 20min, 21min, 22min, 23min, 24min, 25min

KEY PLAN



DETAILS OF UNAUTHORISED COLONY

Sr. No.	Parameter Name	Description
1	Colony name	KHATIAN WALA MOHALLA EXTN. & JAT COLONY EXTN.
2	Area	36.200 Acres
3	Location of the colony	Near By Rohtak Bhiwani Road
	(i) Within MC	YES
	(ii) Outside MC	No
4	Type of Colony and use (in %)	Residential 30.49% Vacant 42.75% Road 21.79% Commercial 4.96%
5	Controlled Area	Kalanau
6	Urban Area	Kalanau
7	Year of establishment	2002
8	Layout Plan (at 1 cm : 10m)	1:1000
9	Total Plots	-
10	Constructed Plots (Residential/Commercial)	708(R) + 7(C) = 780
11	Number of vacant plots	-
12	Number of Families residing in the colony	701
13	Does the colony have Electricity?	Yes
14	Does the colony have water supply through pipelines?	Yes
15	Does the colony have underground sewerage facility?	Yes
16	If connected to any external Sewage treatment plant (ETP)?	No
17	Does the colony have Park or Open space?	No
18	Road type on Colony (Kacha/Pucca)	Partly Kuchha/Pucca
19	Width of different roads (in meters)	Road Width Length (in mtrs) 3 M to 6.6 M 5510 M
20	Minimum Road width	3 M
21	Electricity provided to households through which sub station	Kalanau
22	Does the colony have community site	No
23	Area of the community site (in acres)	-
24	Is the RWA registered	No
25	Additional Information, if any	RESIDENTIAL & PUBLIC USE ZONE

SCALE 1:1000

DRONE SURVEY & LAYOUT PREPARED BY:
 PD CONSULTING ENGINEERS PVT.LTD

hello@pdcegroup.com www.pdcegroup.com
 Red House, Behind MCD School,
 Mehrauli-Gurgaon Rd, Ghitorni, Delhi - 30

1	Checked: PDCE	Surveyor:	Sheet No. A0
2	Drawn By: Rashid	Slk. No.: 1 OF 1	Rev No. B0

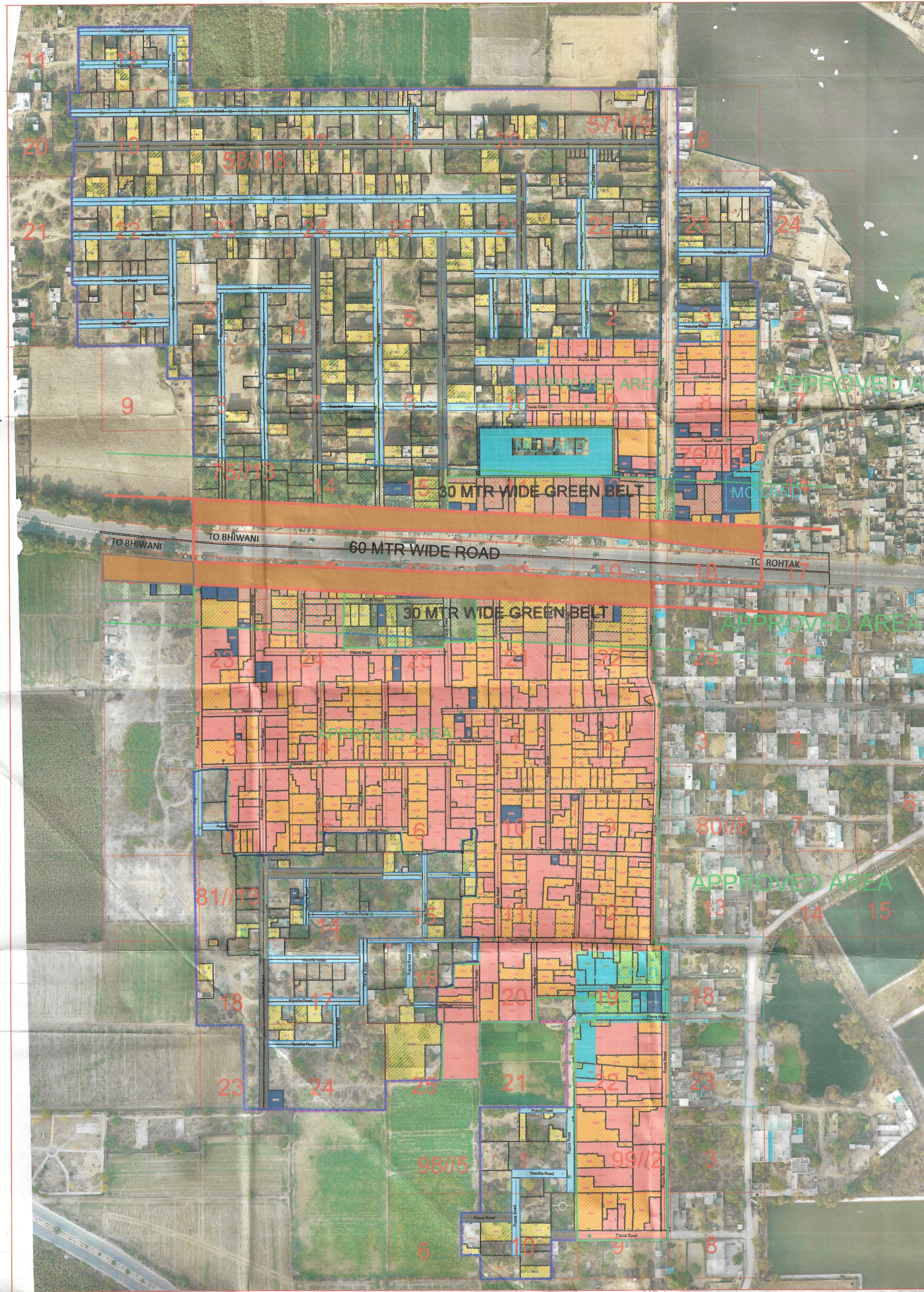
NOTE:
 ALL DIMENSIONS ARE IN METERS AND AREA IN ACRES.

DRG. NO. DTP(R) 78 DATED 03.03.2022

LAYOUT PLAN CHECKED AND VERIFIED AT SITE BY:-

ASSISTANT DRAFTSMAN
 PLANNING ASSISTANT
 ASSISTANT TOWN PLANNER
 DISTRICT TOWN PLANNER

OFFICE OF DISTRICT TOWN PLANNER, ROHTAK
 TOWN & COUNTRY PLANNING DEPT., HARYANA



This layout plan of unauthorised colony is approved and notified by the Government vide notification no. 09/45/2024 - 4C - II dated 6th March, 2024. The same be scanned for uploading on the web portal.

PE
 Consultant/PE
 APP

LEGEND OF INTERNAL ROADS IN COLONY

Sr. No.	WIDTH OF INTERNAL ROADS	COLOR
1.	UP TO 1.5 MTR.	[Color]
2.	1.5 TO 2.0 MTR.	[Color]
3.	2.0 TO 2.5 MTR.	[Color]
4.	2.5 TO 3.0 MTR.	[Color]
5.	3.0 TO 3.5 MTR.	[Color]
6.	3.5 TO 4.0 MTR.	[Color]
7.	4.0 TO 4.5 MTR.	[Color]
8.	4.5 TO 5.0 MTR.	[Color]
9.	5.0 TO 5.5 MTR.	[Color]
10.	5.5 TO 6.0 MTR.	[Color]
11.	6.0 TO 6.5 MTR.	[Color]
12.	6.5 TO 7.0 MTR.	[Color]
13.	7.0 TO 7.5 MTR.	[Color]
14.	7.5 TO 8.0 MTR.	[Color]
15.	8.0 TO 8.5 MTR.	[Color]
16.	8.5 TO 9.0 MTR.	[Color]
17.	9.0 TO 9.5 MTR.	[Color]
18.	9.5 TO 10.0 MTR.	[Color]
19.	10.0 TO 10.5 MTR.	[Color]
20.	10.5 TO 11.0 MTR.	[Color]
21.	11.0 TO 11.5 MTR.	[Color]
22.	11.5 TO 12.0 MTR.	[Color]
23.	12.0 TO 12.5 MTR.	[Color]
24.	12.5 TO 13.0 MTR.	[Color]
25.	13.0 TO 13.5 MTR.	[Color]
26.	13.5 TO 14.0 MTR.	[Color]
27.	14.0 TO 14.5 MTR.	[Color]
28.	14.5 TO 15.0 MTR.	[Color]
29.	15.0 TO 15.5 MTR.	[Color]
30.	15.5 TO 16.0 MTR.	[Color]
31.	16.0 TO 16.5 MTR.	[Color]
32.	16.5 TO 17.0 MTR.	[Color]
33.	17.0 TO 17.5 MTR.	[Color]
34.	17.5 TO 18.0 MTR.	[Color]
35.	18.0 TO 18.5 MTR.	[Color]
36.	18.5 TO 19.0 MTR.	[Color]
37.	19.0 TO 19.5 MTR.	[Color]
38.	19.5 TO 20.0 MTR.	[Color]
39.	20.0 TO 20.5 MTR.	[Color]
40.	20.5 TO 21.0 MTR.	[Color]
41.	21.0 TO 21.5 MTR.	[Color]
42.	21.5 TO 22.0 MTR.	[Color]
43.	22.0 TO 22.5 MTR.	[Color]
44.	22.5 TO 23.0 MTR.	[Color]
45.	23.0 TO 23.5 MTR.	[Color]
46.	23.5 TO 24.0 MTR.	[Color]
47.	24.0 TO 24.5 MTR.	[Color]
48.	24.5 TO 25.0 MTR.	[Color]
49.	25.0 TO 25.5 MTR.	[Color]
50.	25.5 TO 26.0 MTR.	[Color]
51.	26.0 TO 26.5 MTR.	[Color]
52.	26.5 TO 27.0 MTR.	[Color]
53.	27.0 TO 27.5 MTR.	[Color]
54.	27.5 TO 28.0 MTR.	[Color]
55.	28.0 TO 28.5 MTR.	[Color]
56.	28.5 TO 29.0 MTR.	[Color]
57.	29.0 TO 29.5 MTR.	[Color]
58.	29.5 TO 30.0 MTR.	[Color]
59.	30.0 TO 30.5 MTR.	[Color]
60.	30.5 TO 31.0 MTR.	[Color]
61.	31.0 TO 31.5 MTR.	[Color]
62.	31.5 TO 32.0 MTR.	[Color]
63.	32.0 TO 32.5 MTR.	[Color]
64.	32.5 TO 33.0 MTR.	[Color]
65.	33.0 TO 33.5 MTR.	[Color]
66.	33.5 TO 34.0 MTR.	[Color]
67.	34.0 TO 34.5 MTR.	[Color]
68.	34.5 TO 35.0 MTR.	[Color]
69.	35.0 TO 35.5 MTR.	[Color]
70.	35.5 TO 36.0 MTR.	[Color]
71.	36.0 TO 36.5 MTR.	[Color]
72.	36.5 TO 37.0 MTR.	[Color]
73.	37.0 TO 37.5 MTR.	[Color]
74.	37.5 TO 38.0 MTR.	[Color]
75.	38.0 TO 38.5 MTR.	[Color]
76.	38.5 TO 39.0 MTR.	[Color]
77.	39.0 TO 39.5 MTR.	[Color]
78.	39.5 TO 40.0 MTR.	[Color]
79.	40.0 TO 40.5 MTR.	[Color]
80.	40.5 TO 41.0 MTR.	[Color]
81.	41.0 TO 41.5 MTR.	[Color]
82.	41.5 TO 42.0 MTR.	[Color]
83.	42.0 TO 42.5 MTR.	[Color]
84.	42.5 TO 43.0 MTR.	[Color]
85.	43.0 TO 43.5 MTR.	[Color]
86.	43.5 TO 44.0 MTR.	[Color]
87.	44.0 TO 44.5 MTR.	[Color]
88.	44.5 TO 45.0 MTR.	[Color]
89.	45.0 TO 45.5 MTR.	[Color]
90.	45.5 TO 46.0 MTR.	[Color]
91.	46.0 TO 46.5 MTR.	[Color]
92.	46.5 TO 47.0 MTR.	[Color]
93.	47.0 TO 47.5 MTR.	[Color]
94.	47.5 TO 48.0 MTR.	[Color]
95.	48.0 TO 48.5 MTR.	[Color]
96.	48.5 TO 49.0 MTR.	[Color]
97.	49.0 TO 49.5 MTR.	[Color]
98.	49.5 TO 50.0 MTR.	[Color]
99.	50.0 TO 50.5 MTR.	[Color]
100.	50.5 TO 51.0 MTR.	[Color]

FINAL AREA TO BE CONSIDERED FOR NOTIFICATION AS APPROVED BY DLSC

AREA	71.644 Acres
AREA NOT TO BE CONSIDERED	22.971 Acres
AREA OF COLONY FALLING UNDER GREEN BELT / ROAD ETC.	12.473 Acres
AREA OF COLONY TO BE CONSIDERED FOR NOTIFICATION	36.200 Acres
57// 19, 20, 21, 22, 23min, 24min	
58// 11min, 12min, 16, 17, 18, 19, 20min, 21min, 22, 23, 24, 25	
59// 1min, 2, 3, 4, 5, 6, 7, 8, 12min, 14min, 15min	
76// 1, 2, 3min, 10min	
80// 10min, 11min, 12min, 13min	
81// 6min, 7min, 8min, 15min, 16min, 17min, 18min, 19min, 20min, 21min, 22min, 23min, 24min, 25min	
98// 6min, 7min, 8min, 15min, 16min, 17min, 18min, 19min, 20min, 21min, 22min, 23min, 24min, 25min	
TYPE OF COLONY AND USE (%)	RESIDENTIAL 11.482 %
DIFFERENT ROADS (IN MTR.)	RESIDENTIAL LENGTH (IN MTR.)
KATCHA ROAD	3 TO 6 M 3436.200 M
	6 TO 9 M 1053.450 M
TOTAL ROAD AREA	ABOVE 9 M 0.00 M
	6.238 ACRES

SDO 'Op. S/Div. UHBVN
 Kalanau (Rohtak)

TEHSILDAR

XEN PHED

DISTRICT FIRE OFFICER

XEN PWD (B&R)

DISTRICT TOWN PLANNER

DEPUTY COMMISSIONER ROHTAK

LEGEND

ManHole/ Chamber	[Symbol]	APPROVED AREA Colony Boundary	[Symbol]	Public & Semipublic Area (Area in Acre)	[Symbol]
Transformer / Electric Pole/ Mobile Tower	[Symbol]	Colony Boundary	[Symbol]	Commercial Area	[Symbol]
Street Light / Solar Pole	[Symbol]	HT Line	[Symbol]	Residential Area	[Symbol]
Revenue Boundary	[Symbol]	Sewerage Line	[Symbol]	Industrial Area	[Symbol]
City Road	[Symbol]	Kachcha Road	[Symbol]	Drain / Culvert / Bridge	[Symbol]
Khasra Line	[Symbol]	Vacant Land (Not to be Regularised) (Area in Acre)	[Symbol]	Pucca Road	[Symbol]
Murraba Line	[Symbol]	Tin Shed	[Symbol]	Temple/Mosque/Church/Flag Post	[Symbol]
				Statue/School/Airport/Hospital/Well	[Symbol]

District Municipal Commissioner Rohtak

Administrator Municipal Committee Kalanau-Cum S.D.O. (C.), Rohtak

Secretary Municipal Committee Kalanau

Municipal Engineer, MUNICIPAL COMMITTEE Kalanau (Rohtak)

Junior Engineer, MUNICIPAL COMMITTEE Kalanau (Rohtak)

6