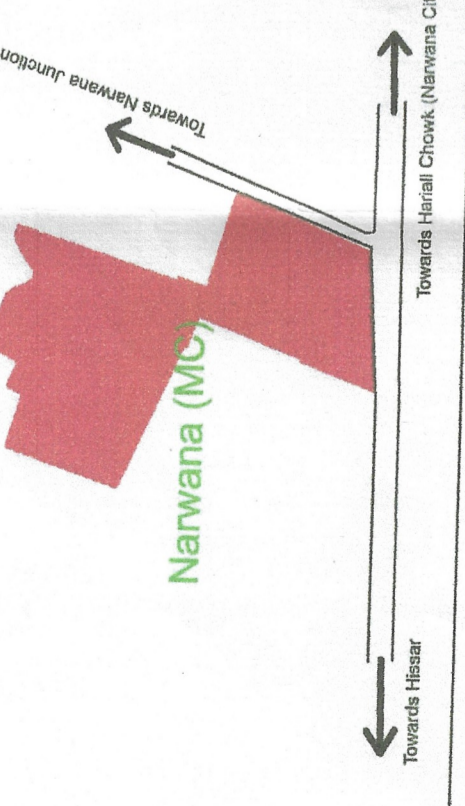


DISTRICT JIND

LAYOUT PLAN OF UNAUTHORIZED COLONY NEAR KAITHAL TO HISAR ROAD IN THE REVENUE ESTATE OF NARWANA TEH.-NARWANA AND DIST.-JIND

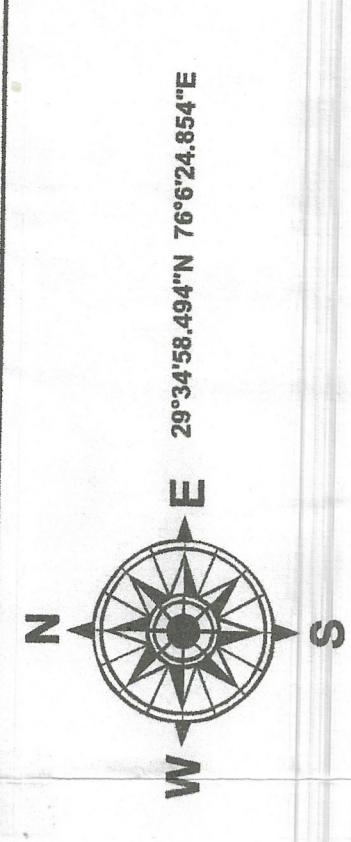
KHASRA NO
 ~328/16min, 17min, 23min, 24, 25, 26
 ~328/20min, 21min, 22min, 23min, 24min, 25min, 26min
 ~350/17min, 18min, 19min, 20min, 21min, 22min, 23min, 24min, 25min, 26min

KEY PLAN



Sr. No.	Parameter Name	Description
1	Colony name	Narwana UCB
2	Area	8.08 Acres
3	Near C.O. / Near U.P. / Near Public School	32732.25 Sq/M
4	Municipal Limits Boundary (M.C. STATUS)	(A) Within M.C. Yes (B) Outside M.C. No (C) Partial M.C. No
5	Type of Colony and use (in %)	Residential 15% Vacant + Open 79% Road 18% Commercial 0% Industrial 0% Building 15%
6	Name of Revenue Estate	Narwana
7	Name of District	Jind
8	Name of Commencement Act	OP Narwana
9	Urban Area	Narwana
10	Year of establishment	2020
11	Total No. of Plots	70
12	No. of Constructed Plots (Residential/Commercial/Industrial)	34/0/34
13	Number of vacant plots	42
14	Number of families residing in the colony	34
15	Does the colony have street light?	Yes
16	Does the colony have Electric Line	Yes
17	Does the colony have HT Line	No
18	Does the colony have water supply through Pucca Road	No
19	Does the colony have underground sewerage facility?	Yes
20	Does the colony have Park or Open space	Yes
21	Road type on Colony (Kuccha/Pucca)	Kuccha/Pucca
22	Difference road (in meters)	6.00 Mts. (Kuccha) / 4.24 Mts. (Pucca)
23	Minimum Road Width	6.00 Mts. (Kuccha) / 4.24 Mts. (Pucca)
24	Area of the community shed (in acres)	0.11
25	Is the RWA registered	No
26	Additional Information, if any	
27	Name of Electric Substation	D107A

DRG. NO D.T.P. (J) 1446/2022 DT.
 LAYOUT PLAN CHECKED AND VERIFIED AT SITE BY:
 PATWARI: *[Signature]*
 JUNIOR ENGINEER: *[Signature]*
 JUNIOR DRAFTSMAN: *[Signature]*
 DISTRICT TOWN PLANNER: *[Signature]*
 SENIOR TOWN PLANNER:
 OFFICE OF DISTRICT TOWN PLANNER, JIND TOWN & COUNTRY PLANNING DEPTT, HARYANA



LEGEND

- Airport
- Electric Pole
- Hospital
- Man Hole
- Mobile Tower
- Mosque
- School/College
- Solar Pole
- Street Light
- Temple
- Transformer
- HT Line
- LT Line
- Kuccha Road
- Pucca Road
- Major Road Line
- Drainage
- Sewerage Storm water
- Kuccha Road Polygon
- Pucca Road Polygon
- Residential
- Commercial
- Industrial
- Plot Boundary
- Vacant Land
- Park
- Colony Boundary
- Khasra Boundary
- Revenue Estate Boundary
- Musill Boundary
- District Boundary

NOTE:
 * ALL DIMENSIONS ARE IN METERS AND AREA IN SQUARE METERS.
 * AREA OF RESIDENTIAL BUILDINGS IS INDICATED THROUGH PINK COLOUR
 * AREA OF PLOT BOUNDARY IS INDICATED THROUGH PURPLE COLOUR.

SCALE : 1 CM = 10 M

DRONE SURVEY AND LAYOUT PLAN PREPARED BY:-



CHECKED: SURVEYOR: SCALE: 1:50000
 DRAWN BY: SHT. NO. REV. NO.
 DRAWING NO.: N-UC-08

FINAL AREA TO BE CONSIDERED FOR NOTIFICATION U.C. 8 Narwana

Area of colony surveyed (including Khasra nos.)	Area not to be considered as per clause 5, I.C.	Area of the colony falling under greenbelt/road/buffer zone/vacant land/multi-use etc/commercial (including in area nos.)	Area of colony falling outside MC with khasra nos.	Area of colony to be considered for notification	NI
328/16min, 17min, 23min, 24, 25, 26 328/20min, 21min, 22min, 23min, 24min, 25min, 26min 350/17min, 18min, 19min, 20min, 21min, 22min, 23min, 24min, 25min, 26min	328/16min, 17min, 23min, 24, 25, 26 328/20min, 21min, 22min, 23min, 24min, 25min, 26min 350/17min, 18min, 19min, 20min, 21min, 22min, 23min, 24min, 25min, 26min	328/16min, 17min, 23min, 24, 25, 26 328/20min, 21min, 22min, 23min, 24min, 25min, 26min 350/17min, 18min, 19min, 20min, 21min, 22min, 23min, 24min, 25min, 26min	328/16min, 17min, 23min, 24, 25, 26 328/20min, 21min, 22min, 23min, 24min, 25min, 26min 350/17min, 18min, 19min, 20min, 21min, 22min, 23min, 24min, 25min, 26min	328/16min, 17min, 23min, 24, 25, 26 328/20min, 21min, 22min, 23min, 24min, 25min, 26min 350/17min, 18min, 19min, 20min, 21min, 22min, 23min, 24min, 25min, 26min	NI

CV *[Signature]* DATE: 6.5.2024



Towards Narwana Junction
 Towards Harial Chowk (Narwana City)
 Towards Hissar

Executive Officer
 Municipal Council
 Narwana
 District: Municipal Corporation
 M.C. Narwana
 Haryana