

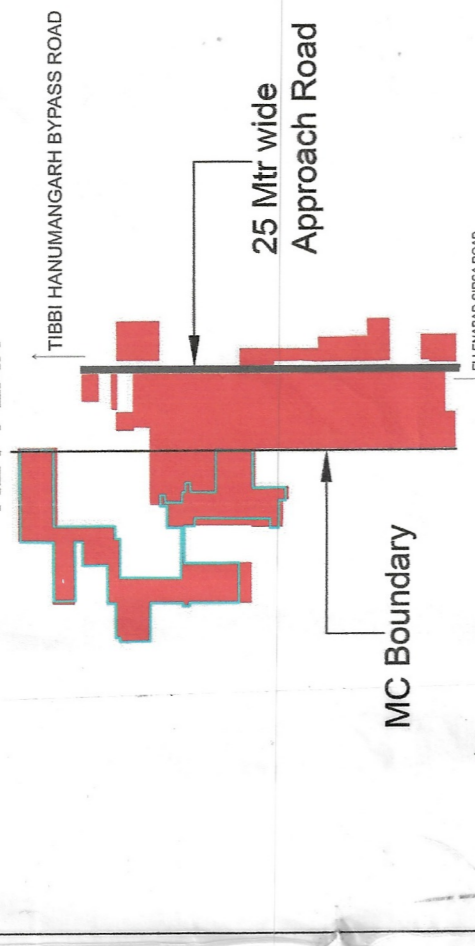
# DISTRICT SIRSA

LAYOUT PLAN OF UNAUTHORISED COLONY NEAR ELLENABAD TO TIBBI HANUMANGARH BYPASS ROAD IN THE REVENUE ESTATE OF ELLENABAD TEH. ELLENABAD AND DIST. SIRSA

KHASRA NO ELLENABAD

182// 13 min, 14, 15, 18 min, 19 min, 21 min, 22 min, 23 min  
235// 5 min, 7 min, 8 min, 9 min, 10 min, 11 min, 12, 236// 1 min, 2 min, 3 min, 4 min, 5 min, 6 min, 7 min, 8 min, 9 min, 10 min, 11 min, 12, 13 min, 14 min, 15 min, 16, 17 min, 19 min, 20 min, 23 min, 24 min

## KEY PLAN



## DETAILS OF UNAUTHORIZED COLONY

Sr. No.	Parameter Name	Description
1	Colony Name	UC-E3
2	Area	13.84 Acres 56,011.2 Sq. M
3	Location of the colony	SIRSA TO ELLENABAD ROAD
4	Municipal Limits Boundary (MC STATUS):	(i) Within MC Yes (ii) Partial MC No (iii) Outside MC No
5	Type of Colony and use (in %)	Area (%) Area (Sq. M) Residential 21.27% 2.84 11,915 Vacant + Open Road 60.88% 8.43 34,099.2 Commercial 15.49% 2.14 8,075 Industrial 02.36% 0.33 1,322 Bulldip 23.83% 3.27 13,227
6	Name of Revenue Estate	SIRSA
7	District Name	MC ELLENABAD
8	Name of Controlled Area	ELLENABAD
9	Urban Area	2010
10	Year of establishment	185
11	Total No. of Plots	185
12	Plot (Residential-Commercial-Industrial)	70+40+74
13	Number of seven plots	70
14	Number of families residing in the colony	31
15	Does the colony have street light?	Yes
16	Does the colony have Electric Line	Yes
17	Does the colony have FT Line	No
18	Does the colony have water supply through pipelines?	Yes
19	Does the colony have underground sewerage facility?	Yes
20	Does the colony have Park or Open space	No
21	Road type on Colony (Kuccha/Pucca)	Kuccha & Pucca
22	Different roads (in meters)	Length (in mtr) 4M TO 7M 200.26 M 3M TO 3.5M 1,370.52 M
23	Midlane Road Width	3M
24	Area of the community (in sq. mtr)	No
25	Is the NVA registered	No
26	Additional information, if any	No
27	Name of Electric Substation	ELLENABAD

DRG. NO D.T.P. (S) 49 DT 26.04.2022

LAYOUT PLAN CHECKED AND VERIFIED AT SITE BY:

PATWARI: *[Signature]*  
 FIELD INVESTIGATOR: *[Signature]*  
 JUNIOR ENGINEER: *[Signature]*  
 ASSISTANT DRAFTSMAN: *[Signature]*  
 DISTRICT TOWN PLANNER: *[Signature]*  
 SENIOR TOWN PLANNER: *[Signature]*  
 OFFICE OF DISTRICT TOWN PLANNER, SIRSA TOWN & COUNTRY PLANNING DEPTT, HARYANA

S.No.	Legend of Internal Roads in Colors	Color
1	Upto 1.5m	[Color]
2	1.5-2.0 m	[Color]
3	2.0-2.5 m	[Color]
4	2.5-3.0 m	[Color]
5	3.0-6.0 m	[Color]
6	6.0-9.0 m	[Color]
7	Above 9.0 m	[Color]
8	Commercial Area Shown Thus	[Color]

Colony Approach Road 6m wide

This layout plan of unauthorised colony is approved and notified by the Government vide notification no. 04/42/2023 - 2CI dated 6<sup>th</sup> October, 2023. The same be scanned for uploading on the web portal.

MC Boundary

182/12, 182/13, 182/14, 182/15, 182/16, 182/17, 182/18, 182/19, 182/20, 182/21, 182/22, 182/23, 182/24, 182/25, 182/26, 182/27, 182/28, 182/29, 182/30, 182/31, 182/32, 182/33, 182/34, 182/35, 182/36, 182/37, 182/38, 182/39, 182/40, 182/41, 182/42, 182/43, 182/44, 182/45, 182/46, 182/47, 182/48, 182/49, 182/50, 182/51, 182/52, 182/53, 182/54, 182/55, 182/56, 182/57, 182/58, 182/59, 182/60, 182/61, 182/62, 182/63, 182/64, 182/65, 182/66, 182/67, 182/68, 182/69, 182/70, 182/71, 182/72, 182/73, 182/74, 182/75, 182/76, 182/77, 182/78, 182/79, 182/80, 182/81, 182/82, 182/83, 182/84, 182/85, 182/86, 182/87, 182/88, 182/89, 182/90, 182/91, 182/92, 182/93, 182/94, 182/95, 182/96, 182/97, 182/98, 182/99, 182/100

236/10, 236/11, 236/12, 236/13, 236/14, 236/15, 236/16, 236/17, 236/18, 236/19, 236/20, 236/21, 236/22, 236/23, 236/24, 236/25, 236/26, 236/27, 236/28, 236/29, 236/30, 236/31, 236/32, 236/33, 236/34, 236/35, 236/36, 236/37, 236/38, 236/39, 236/40, 236/41, 236/42, 236/43, 236/44, 236/45, 236/46, 236/47, 236/48, 236/49, 236/50, 236/51, 236/52, 236/53, 236/54, 236/55, 236/56, 236/57, 236/58, 236/59, 236/60, 236/61, 236/62, 236/63, 236/64, 236/65, 236/66, 236/67, 236/68, 236/69, 236/70, 236/71, 236/72, 236/73, 236/74, 236/75, 236/76, 236/77, 236/78, 236/79, 236/80, 236/81, 236/82, 236/83, 236/84, 236/85, 236/86, 236/87, 236/88, 236/89, 236/90, 236/91, 236/92, 236/93, 236/94, 236/95, 236/96, 236/97, 236/98, 236/99, 236/100

M.C area

M.C BOUNDARY LIMIT  
 NOTIFICATION NO - 24/7/88-2C1  
 DATE - 23 DEC 1988

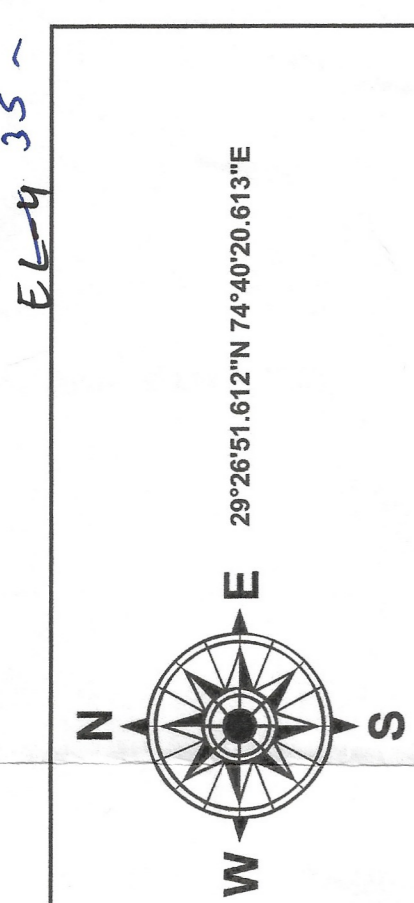
M.C BOUNDARY LIMIT  
 NOTIFICATION NO - 24/7/88-2C1  
 DATE - 23 DEC 1988

Secretary  
 Municipal Committee  
 Ellenabad

Junior Engineer (Civil)  
 Municipal Committee  
 ELLENABAD

Junior Engineer (Civil)  
 Municipal Committee  
 ELLENABAD

Patwari  
 F.I.



29°26'51.612"N 74°40'20.615"E

M.C. BOUNDARY LIMIT  
 NOTIFICATION NO - 24/7/88-2C1  
 DATE - 23 Dec. 1988

M.C. BOUNDARY LIMIT  
 NOTIFICATION NO - 24/7/88-2C1  
 DATE - 23 Dec. 1988

M.C. BOUNDARY LIMIT  
 NOTIFICATION NO - 24/7/88-2C1  
 DATE - 23 Dec. 1988

M.C. BOUNDARY LIMIT  
 NOTIFICATION NO - 24/7/88-2C1  
 DATE - 23 Dec. 1988

M.C. BOUNDARY LIMIT  
 NOTIFICATION NO - 24/7/88-2C1  
 DATE - 23 Dec. 1988

M.C. BOUNDARY LIMIT  
 NOTIFICATION NO - 24/7/88-2C1  
 DATE - 23 Dec. 1988

M.C. BOUNDARY LIMIT  
 NOTIFICATION NO - 24/7/88-2C1  
 DATE - 23 Dec. 1988

M.C. BOUNDARY LIMIT  
 NOTIFICATION NO - 24/7/88-2C1  
 DATE - 23 Dec. 1988

**LEGEND**

- Airport
- Electric Pole
- Hospital
- Man Hole
- Mobile Tower
- Mosque
- School/College
- Solar Pole
- Street Light
- Temple
- Transformer
- HT Line
- LT Line
- Kuccha Road
- Pucca Road
- Major Road Line
- Drainage
- Sewerage Storm water
- Kuccha Road Polygon
- Pucca Road Polygon
- Residential
- Commercial
- Industrial
- Plot Boundary
- Vacant Land
- Park
- Colony Boundary
- Khasra Boundary
- Revenue Estate Boundary
- Mustil Boundary
- District Boundary
- MC Boundary

NOTE:  
 \* ALL DIMENSIONS ARE IN METERS AND AREA IN SQUARE METERS.  
 \* AREA OF RESIDENTIAL BUILDINGS IS INDICATED THROUGH PINK COLOUR.  
 \* AREA OF PLOT BOUNDARY IS INDICATED THROUGH PURPLE COLOUR.

SCALE : 1 CM = 10 M  
 0 12.5 25 50 75 M

DRONE SURVEY AND LAYOUT PLAN PREPARED BY:-

Checked: \_\_\_\_\_  
 Drawn by: \_\_\_\_\_  
 Drawing No.: UC-E-3

Scale: -  
 Surveyor: \_\_\_\_\_  
 SHT. NO. REV. NO. UC-E-3

UC-E-3

UC-E-3

UC-E-3

UC-E-3

TO WARD MAMMERAN

TIBBI HANUMANGARH BYPASS ROAD

TIBBI HANUMANGARH BYPASS ROAD

TIBBI HANUMANGARH BYPASS ROAD

TIBBI HANUMANGARH BYPASS ROAD

TIBBI HANUMANGARH BYPASS ROAD

TIBBI HANUMANGARH BYPASS ROAD

TIBBI HANUMANGARH BYPASS ROAD

TIBBI HANUMANGARH BYPASS ROAD

TIBBI HANUMANGARH BYPASS ROAD

MC Boundary

MC Boundary

MC Boundary

MC Boundary

MC Boundary

MC Boundary

MC Boundary

MC Boundary

MC Boundary

MC Boundary

MC Boundary

MC Boundary

MC Boundary

MC Boundary

MC Boundary

MC Boundary

MC Boundary

MC Boundary

MC Boundary

MC Boundary

MC Boundary

MC Boundary

MC Boundary

MC Boundary

MC Boundary

MC Boundary

MC Boundary

MC Boundary

MC Boundary

MC Boundary

MC Boundary

MC Boundary

MC Boundary

MC Boundary

MC Boundary

MC Boundary

MC Boundary

MC Boundary

MC Boundary

MC Boundary

MC Boundary

MC Boundary

MC Boundary

MC Boundary

MC Boundary

MC Boundary

MC Boundary

MC Boundary

MC Boundary

MC Boundary

MC Boundary

MC Boundary

MC Boundary

MC Boundary

MC Boundary

MC Boundary

MC Boundary

MC Boundary

MC Boundary

MC Boundary

MC Boundary

MC Boundary

MC Boundary

MC Boundary

MC Boundary

MC Boundary

MC Boundary

MC Boundary

MC Boundary

MC Boundary

35

AMBEDKAR CHUK.

SIRSA ROAD

HANUMANGARH

MC ELLENABAD

SIRSA

UC-E-3