

DISTRICT JIND

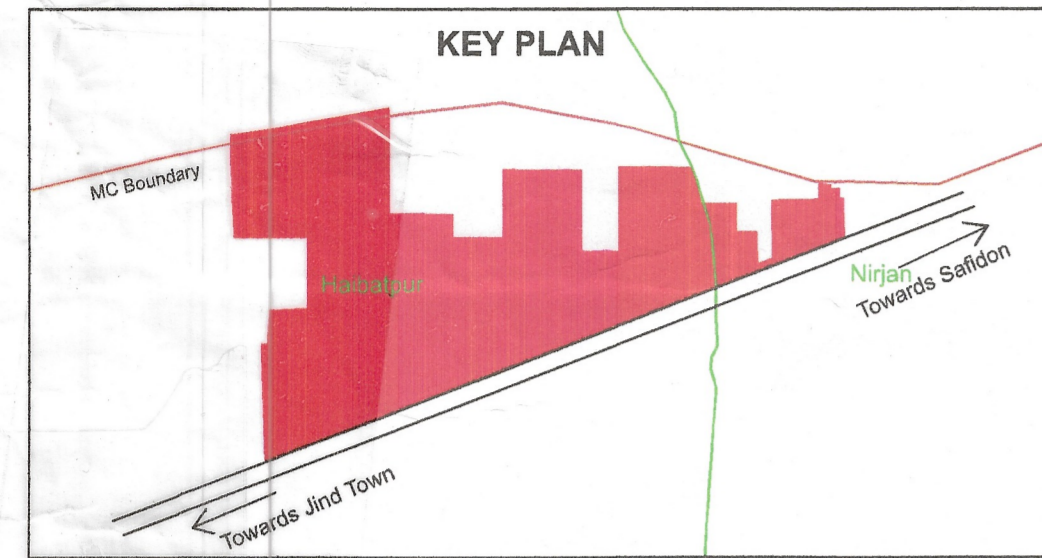
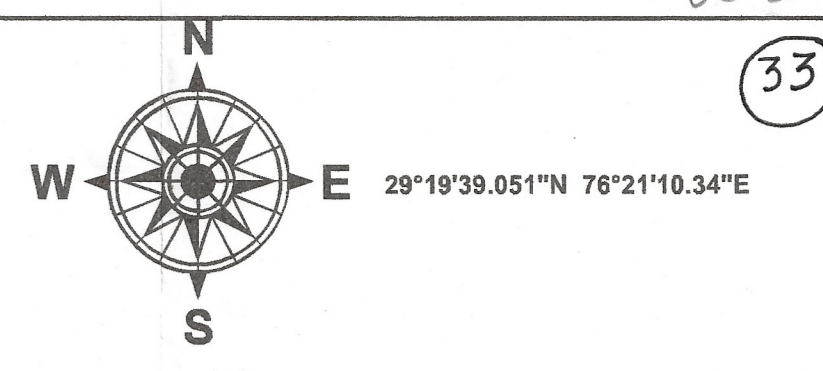
LAYOUT PLAN OF UNAUTHORISED COLONY NEAR JIET CONVERT SCHOOL IN THE REVENUE ESTATE OF HAIBATPUR AND NIRJAN TEH. JIND AND DIST. JIND

KHASRA NO
Haibatpur
44//21/1min,21/2min,22min,23/1,23/2,24,42//11,20,21,25min,43//15min,16,
17min,24min,25,50//4min,5,6,7/1,14/2,15,17/1min,17/2min,16/1,16/2,24min,
25,52//1min,3/1,3/2,4min,6min,7min,8/1min,8/2,9/2,10min,11min,12min,
13/1min,13/2min,20min,55//4min,5/1min,54//1/1min,1/1/2min,51//1,
3min,4min,5,6,7,8,9,10,11,12/1,12/2,13,14,15,16min,17min,18min,19/1,19/2,
20,21min,22min,23/1min

Municipal Engineer
Municipal Council, Jind

This layout plan of unauthorised colony is approved and notified by the Government vide notification no. 04/42/2023 - 2CI dated 6th October, 2023. The same be scanned for uploading on the web portal.

PE *[Signature]* Consultant/PE
ATP *[Signature]* ATP



DETAILS OF UNAUTHORIZED COLONY			
Sr. No.	Parameter Name	Description	
1	Colony name	Jind-UC-30	
2	Area	56.81 Acres	
3	Location of the colony	Near JIET Convert School	
4	Municipal Limits Boundary (MC STATUS):	(i) Within MC Yes (ii) Outside MC No (iii) Partial MC No	
	5	Type of Colony and use (in %)	Area (%) Area(Acres) Area(Sq/M)
		Residential	14% 9.86 39912.95
Vacant + Open		55% 39.03 157943.11	
Road		19% 13.40 54222.80	
Commercial		9% 6.26 25344.14	
6	Name of Revenue Estate	Haibatpur and Nirjan	
	District Name	Jind	
7	Name of Controlled Area	Jind	
8	Urban Area	Jind	
9	Year of establishment	2011	
10	Total No. of Plots	623	
11	No. of Constructed Plots (Residential+Commercial+Industrial)	240+105+15=362	
12	Number of vacant plots	261	
13	Number of families residing in the colony	240	
14	Does the colony have street light?	Yes	
15	Does the colony have Electric Line	Yes	
16	Does the colony have HT Line	No	
17	Does the colony have water supply through pipelines?	Yes	
18	Does the colony have underground sewerage facility?	No	
19	Does the colony have Park or Open space	No	
20	Road type on Colony (Kuccha/Pucca)	Kuccha & Pucca	
21	Different roads (in meters)	Road Width Length (in mtrs)	
	Pucca Road	5 M to 13.5 M 1075.07 M	
22	Kuccha Road	5 M to 12 M 6161.86 M	
	Minimum Road Width	3.5 M	
23	Area of the community site(in acres)	No	
24	Is the RWA registered	No	
25	Additional Information, if any	No	
26	Name of Electric Substation	DHBVN	

DRG. NO. D.T.P. (J) DT.

LAYOUT PLAN CHECKED AND VERIFIED AT SITE BY:

PATWARI: *[Signature]*

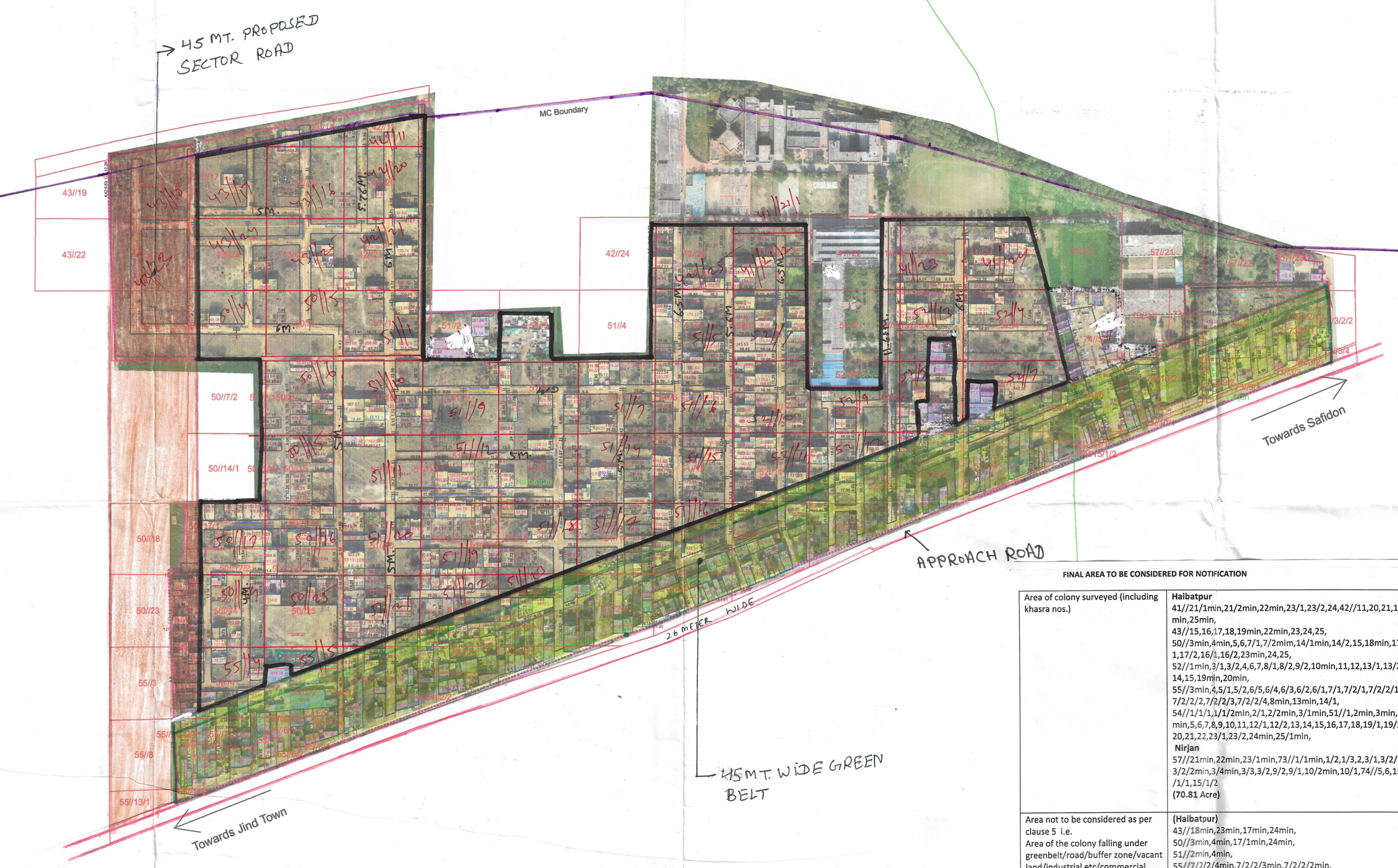
JUNIOR ENGINEER: *[Signature]*

JUNIOR DRAFTSMAN: *[Signature]*

DISTRICT TOWN PLANNER: *[Signature]*

SENIOR TOWN PLANNER:

OFFICE OF DISTRICT TOWN PLANNER, JIND
TOWN & COUNTRY PLANNING DEPTT, HARYANA



FINAL AREA TO BE CONSIDERED FOR NOTIFICATION	
Area of colony surveyed (including khasra nos.)	Haibatpur 41//21/1min,21/2min,22min,23/1,23/2,24,42//11,20,21,14 min,25min, 43//15,16,17,18,19min,22min,23,24,25, 50//3min,4min,5,6,7/1,7/2min,14/1min,14/2,15,18min,17/1,17/2,16/1,16/2,23min,24,25, 52//1min,3/1,3/2,4,6,7,8/1,8/2,9/2,10min,11,12,13/1,13/2,14,15,19min,20min, 55//3min,4,5/1,5/2,5/5,6/4,6/3,6/2,6/1,7/1,7/2/1,7/2/2/1,7/2/2/2,7/2/2/3,7/2/2/4,8min,13min,14/1, 54//1/1,1/1,1/1min,2/1,2/2min,3/1min,5/1/1,2min,3min,4min,5,6,7,8,9,10,11,12/1,12/2,13,14,15,16,17,18,19/1,19/2,20,21,22,23/1,23/2,24min,25/1min, Nirjan 74//5min,15/1/2min,15/1/1min, 73//10/1min,10/2min,9/1min,9/2min,3/3min, 3/2min,3/1min,3/4min,3/2/2min, 57//23/1min (19.12 Acres)
Area not to be considered as per clause 5 i.e. Area of the colony falling under greenbelt/road/buffer zone/vacant land/industrial etc/commercial. (including khasra nos.)	(Haibatpur) 43//18min,23min,17min,24min, 50//3min,4min,17/1min,24min, 51//2min,4min, 55//7/2/4min,7/2/2/3min,7/2/2/2min, 7/2/2/1min,7/2/1min, 55//6/1min,6/2min,5/3min,5/4min,6/5min, 54//2/1min,1/1/2min,2/2min,2/1min,3/1min, 55//7min,8/1min,25/1min 52//7min,8/1min,6min,10min,3/1min,3/2min,3/2min,14min,13min,15min, Nirjan 74//5min,15/1/2min,15/1/1min, 73//10/1min,10/2min,9/1min,9/2min,3/3min, 3/2min,3/1min,3/4min,3/2/2min, 57//23/1min (0.38 Acres)
Area of colony to be considered for notification	Haibatpur 41//21/1min,21/2min,22min,23/1,23/2,24, 42//11,20,21,25min, 43//15min,16,17min,18min,19min,22min,23,24,25, 24min,25, 50//3min,4min,5,6,7/1,7/2min,14/1min,14/2,15,18min,17/1,17/2,16/1,16/2,23min,24,25, 52//1min,3/1,3/2,4,6,7,8/1,8/2,9/2,10min,11,12,13/1,13/2,14,15,19min,20min, 55//3min,4,5/1,5/2,5/5,6/4,6/3,6/2,6/1,7/1,7/2/1,7/2/2/1,7/2/2/2,7/2/2/3,7/2/2/4,8min,13min,14/1, 54//1/1,1/1,1/1min,2/1,2/2min,3/1min,5/1/1,2min,3min,4min,5,6,7,8,9,10,11,12/1,12/2,13,14,15,16,17,18,19/1,19/2,20,21,22,23/1,23/2,24min,25/1min, Nirjan 74//5min,15/1/2min,15/1/1min, 73//10/1min,10/2min,9/1min,9/2min,3/3min, 3/2min,3/1min,3/4min,3/2/2min, 57//23/1min (19.12 Acres)
Area of colony falling outside MC with khasra nos.	43//15min, 16min, 17min, 18min, 19min, 42//11min (0.38 Acres)
Area of colony to be considered for notification	Haibatpur 41//21/1min,21/2min,22min,23/1,23/2,24, 42//11,20,21,25min, 43//15min,16,17min,18min,19min,22min,23,24,25, 24min,25, 50//3min,4min,5,6,7/1,7/2min,14/1min,14/2,15,18min,17/1,17/2,16/1,16/2,23min,24,25, 52//1min,3/1,3/2,4,6,7,8/1,8/2,9/2,10min,11,12,13/1,13/2,14,15,19min,20min, 55//3min,4,5/1,5/2,5/5,6/4,6/3,6/2,6/1,7/1,7/2/1,7/2/2/1,7/2/2/2,7/2/2/3,7/2/2/4,8min,13min,14/1, 54//1/1,1/1,1/1min,2/1,2/2min,3/1min,5/1/1,2min,3min,4min,5,6,7,8,9,10,11,12/1,12/2,13,14,15,16,17,18,19/1,19/2,20,21,22,23/1,23/2,24min,25/1min, Nirjan 74//5min,15/1/2min,15/1/1min, 73//10/1min,10/2min,9/1min,9/2min,3/3min, 3/2min,3/1min,3/4min,3/2/2min, 57//23/1min (19.12 Acres)

LEGEND

- Airport
- Electric Pole
- Hospital
- Manhole
- Mobile Tower
- Mosque
- School/College
- Solar Pole
- Street Light
- Gurudwara
- Transformer
- HT line
- Kuccha Road
- Pucca Road
- Major Road Line
- Drainage
- Sewerage Storm water
- Kuccha Road Polygon
- Pucca Road Polygon
- Residential
- Commercial
- Industrial
- Plot Boundary
- Vacant Land
- Park
- Colony Boundary
- Khasra Boundary
- Revenue Estate Boundary
- Mustil Boundary
- District Boundary
- APPROACH ROAD
- MC BOUNDARY

NOTE:-
 * ALL DIMENSIONS ARE IN METERS AND AREA IN SQUARE METERS.
 * AREA OF RESIDENTIAL BUILDINGS IS INDICATED THROUGH PINK COLOUR.
 * AREA OF PLOT BOUNDARY IS INDICATED THROUGH PURPLE COLOUR.

SCALE : 1 CM = 10 M

DRONE SURVEY AND LAYOUT PLAN PREPARED BY:-



CHECKED BY: SURVEYOR: SCALE:-

DRAWN BY:- SHT. NO. REV. NO.

DRAWING NO :- Jind-UC-30

District Municipal Comm. Assis. Officer
Municipal Council Jind

Executive Engineer
Municipal Council, Jind

Municipal Engineer
Municipal Council, Jind

Executive Engineer
M.C. Jind