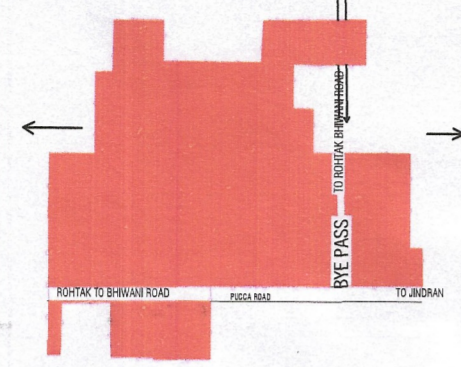


DISTRICT ROHTAK

LAYOUT PLAN OF SAINPURA COLONY-3 SITUATED AT ROHTAK BHIWANI ROAD IN THE REVENUE ESTATE KALANAUR KALAN TEHSIL KALANAUR AND DISTRICT ROHTAK

COMPRISING KHASRA NO - 190/11 MIN, 2 MIN, 3 MIN, 4 MIN, 5 MIN, 8 MIN, 10 MIN, 11, 12 MIN, 13 MIN, 140/14 MIN, 20 MIN, 173/16 MIN, 181/4 MIN, 5 MIN, 18 MIN, 17 MIN, 15 MIN, 124/11 MIN, 11 MIN, 15 MIN, 17 MIN, 18 MIN, 19 MIN, 20 MIN, 21 MIN, 22 MIN, 23 MIN, 24 MIN.

KEY PLAN



DETAILS OF UNAUTHORISED COLONY

Sr. No.	Parameter Name	Description
1	Colony name	SAINPURA COLONY-3
2	Area	17.034 Acres
3	Location of the colony	Near by Rohtak Bhiwani Road
4	Type of Colony and use (in %)	Residential: 29.29%, Waste Road: 13.54%, Public & Semi Public: 2.86%, Institution/Industry: 0.22%
5	Controlled Area	Kalanaur
6	Urban Area	Kalanaur
7	Year of establishment	2002
8	Layout Plan (at 1 cm : 10m)	
9	Total Plots	
10	Controlled Plots Residential/Commercial/Industrial/ Public & Semi Public	155(R) + 1(C) + 1(O) + 2(P) = 155
11	Number of vacant plots	--
12	Number of families residing in the colony	151
13	Does the colony have Electricity?	Yes
14	Does the colony have water supply through pipelines?	No
15	Does the colony have underground sewerage facility?	No
16	Is connected to any external Sewage treatment plant? (Y/N)	No
17	Does the colony have Park or Open space	No
18	Road type on Colony (kacha/pucca)	Partly Kacha/Pucca
19	Width of different roads (in meters)	Road Width Length (in mtr)
20	Minimum Road width	3 M to 10 M 33.00-20 M
21	Electricity provided to households through which sub station	Kalanaur
22	Does the colony have community site	YES
23	Area of the community site (in acres)	3552.1 SQM
24	Is the RWA registered	No
25	Additional information, if any	ZONE RES: COMM. EXISTING.

SCALE 1:1000



DRONE SURVEY & LAYOUT PREPARED BY: PD CONSULTING ENGINEERS PVT.LTD

Red House, Behind MCD School, Mehrauli-Gurgaon Rd, Ghitori, Delhi - 30

1	Checked: POCE	Surveyor:	Sheet No. A0
2	Drawn By: Rashed	BN No. - 1 OF 1	Rev No. R0

NOTE: ALL DIMENSIONS ARE IN METERS AND AREA IN ACRES.

DRG. NO. DTP(R)79 DATED 03-03-2022

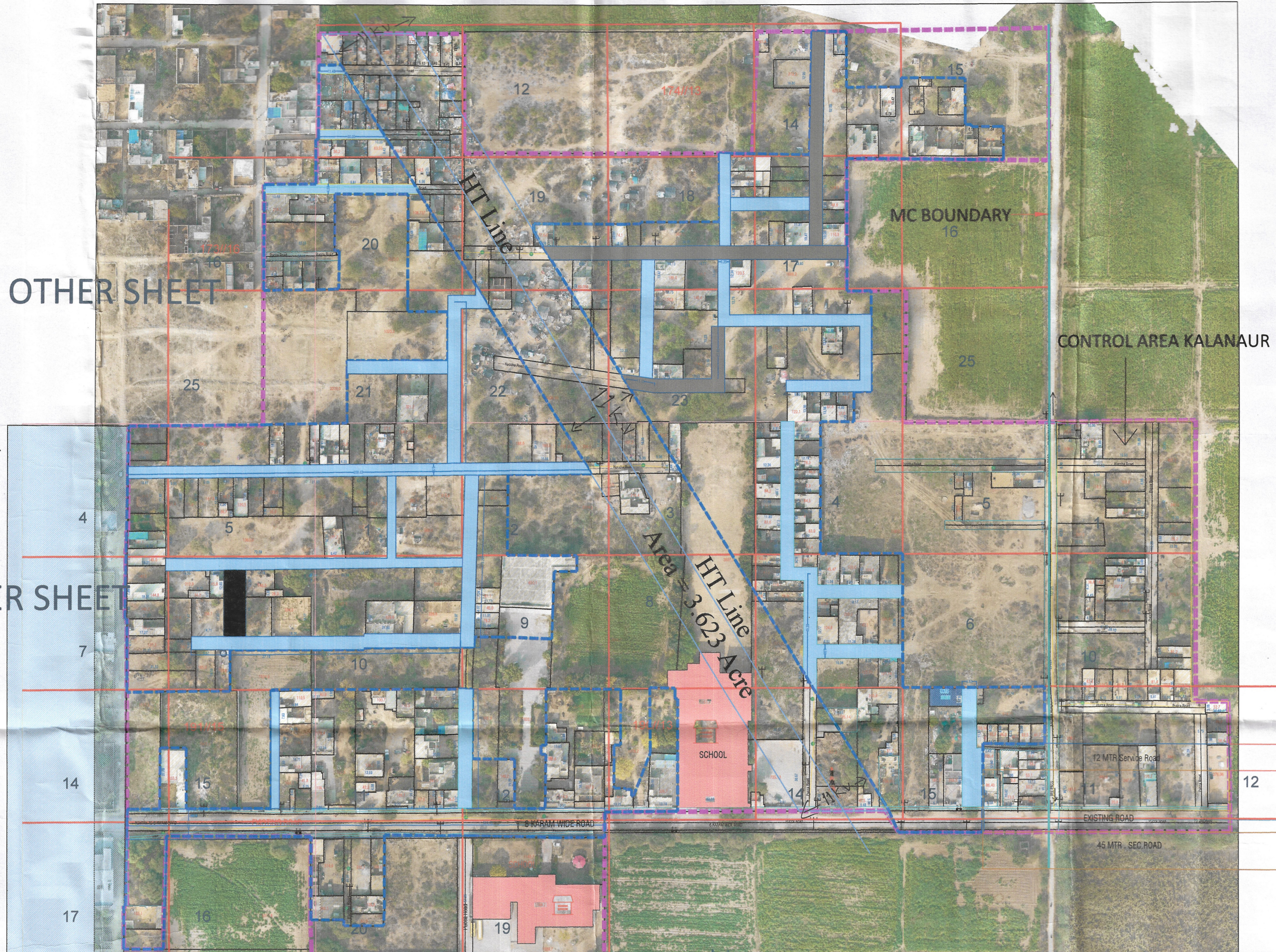
LAYOUT PLAN CHECKED AND VERIFIED AT SITE BY:-

ASSISTANT DRAFTSMAN  
PLANNING ASSISTANT  
ASSISTANT TOWN PLANNER  
DISTRICT TOWN PLANNER

OFFICE OF DISTRICT TOWN PLANNER, ROHTAK TOWN & COUNTRY PLANNING DEPTT., HARYANA

OTHER SHEET

OTHER SHEET



This layout plan of unauthorised colony is approved and notified by the Government vide notification no. 09/45/2024 - 4C - II dated 6<sup>th</sup> March, 2024. The same be scanned for uploading on the web portal.

PE Consultant/PE APP

Sr. No.	WIDTH OF INTERNAL ROADS	COLOUR
1.	UPTO 1.5 MTR.	[Color]
2.	1.5 TO 2.0 MTR.	[Color]
3.	2.0 TO 2.5 MTR.	[Color]
4.	2.5 TO 3.0 MTR.	[Color]
5.	3.0 TO 6.0 MTR.	[Color]
6.	6.0 TO 9.0 MTR.	[Color]
7.	ABOVE 9.0 MTR.	[Color]

Sr. No.	ROAD WIDENING & GREEN BELT	COLOUR
1.	ROAD WIDENING SHOWN THUS	[Color]
2.	GREEN BELT SHOWN THUS	[Color]
3.	GOVT.LAND/ MC. LAND ETC.	[Color]

LEGEND	DESCRIPTION	COLOUR
[Symbol]	ManHole/ Chamber	[Color]
[Symbol]	Transformer / Electric Pole/ Mobile Tower	[Color]
[Symbol]	Street Light / Solar Pole	[Color]
[Symbol]	Revenue Boundary	[Color]
[Symbol]	City Road	[Color]
[Symbol]	Khasra Line	[Color]
[Symbol]	Murraba Line	[Color]
[Symbol]	MC BOUNDARY	[Color]
[Symbol]	Colony Boundary	[Color]
[Symbol]	HT Line	[Color]
[Symbol]	Sewerage Line	[Color]
[Symbol]	Kachcha Road	[Color]
[Symbol]	Vacant Land (Not to be Regularised)	[Color]
[Symbol]	(Area in Acre)	[Color]
[Symbol]	Tin Shed	[Color]
[Symbol]	Public & Semipublic Area (Area in Acre)	[Color]
[Symbol]	Commercial Area	[Color]
[Symbol]	Residential Area	[Color]
[Symbol]	Industrial Area	[Color]
[Symbol]	Drain / Culvert / Bridge	[Color]
[Symbol]	Pucca Road	[Color]
[Symbol]	Temple/Mosque/Church/Flag Post	[Color]
[Symbol]	Statue/School/Airport/Hospital/Well	[Color]

FINAL AREA TO BE CONSIDERED FOR NOTIFICATION AS APPROVED BY DLSC

AREA	RESIDENTIAL	LENGTH (IN MTR.)
AREA NOT TO BE CONSIDERED	32.426 Acres	
AREA OF COLONY FALLING UNDER GREEN BELT / ROAD ETC.	10.650 Acres	
AREA OF COLONY TO BE CONSIDERED FOR NOTIFICATION	17.034 Acres	
TYPE OF COLONY AND USE (%)	RESIDENTIAL	23.472 %
DIFFERENT ROADS (IN MTR.)	RESIDENTIAL	LENGTH (IN MTR.)
KATCHA ROAD	3 TO 6 M	827.05 M
	6 TO 9 M	987.79 M
	ABOVE 9 M	248.58 M
TOTAL ROAD AREA		3.154 ACRES

SDO 'Op. S/Div. UHBVN Kalanaur (Rohtak)  
TEHSILDAR  
DISTRICT FIRE OFFICER  
XEN PWD (B&R)  
XEN PHED  
DISTRICT TOWN PLANNER  
DEPUTY COMMISSIONER ROHTAK

District Municipal Commissioner Rohtak  
Secretary Municipal Committee Kalanaur  
Municipal Engineer Kalanaur (Rohtak)  
Junior Engineer MUNICIPAL COMMITTEE Kalanaur (Rohtak)