

# DISTRICT SIRSA

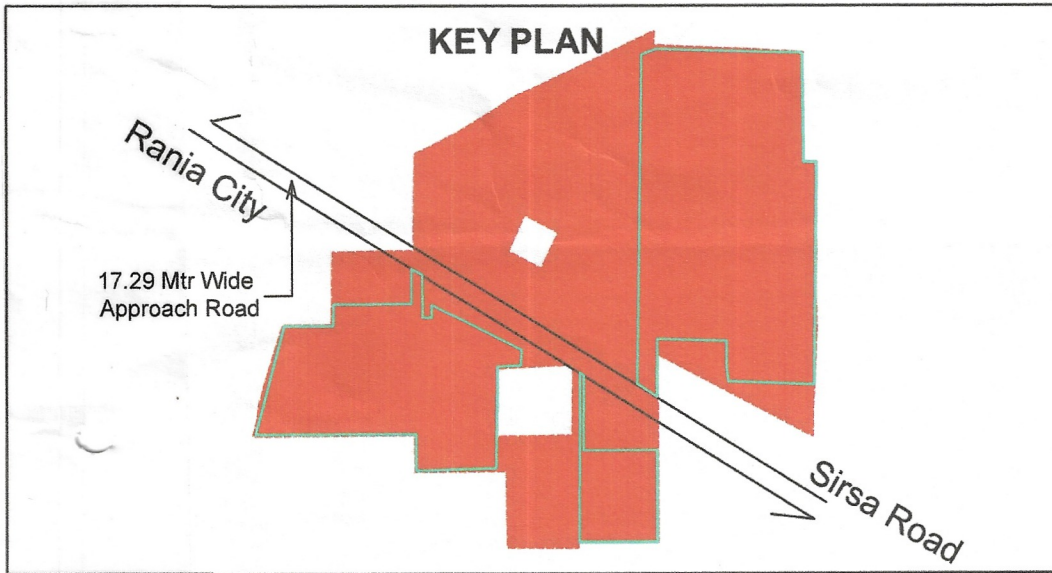
LAYOUT PLAN OF UNAUTHORIZED COLONY  
 RANIA TO SIRSA ROAD  
 IN THE REVENUE ESTATE OF RANIA/ABHOLI  
 DIST. SIRSA

**KHASRA No. -**

**RANIA** - 235 // 19 min, 22 min

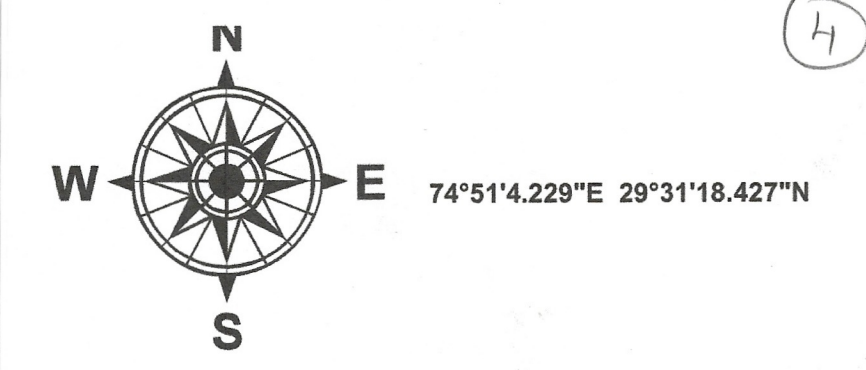
**ABHOLI** - 26 // 16 min, 17 min, 18, 19 min, 22, 23, 24, 25 min  
 - 27 // 1 min, 2, 3 min, 8 min, 10 min, 11 min, 12, 13 min,  
 18 min, 19 min, 22 min, 23 min, 20 min  
 - 45 // 2 min, 3 min, 4 min

C.A.  
Sanku B.I.

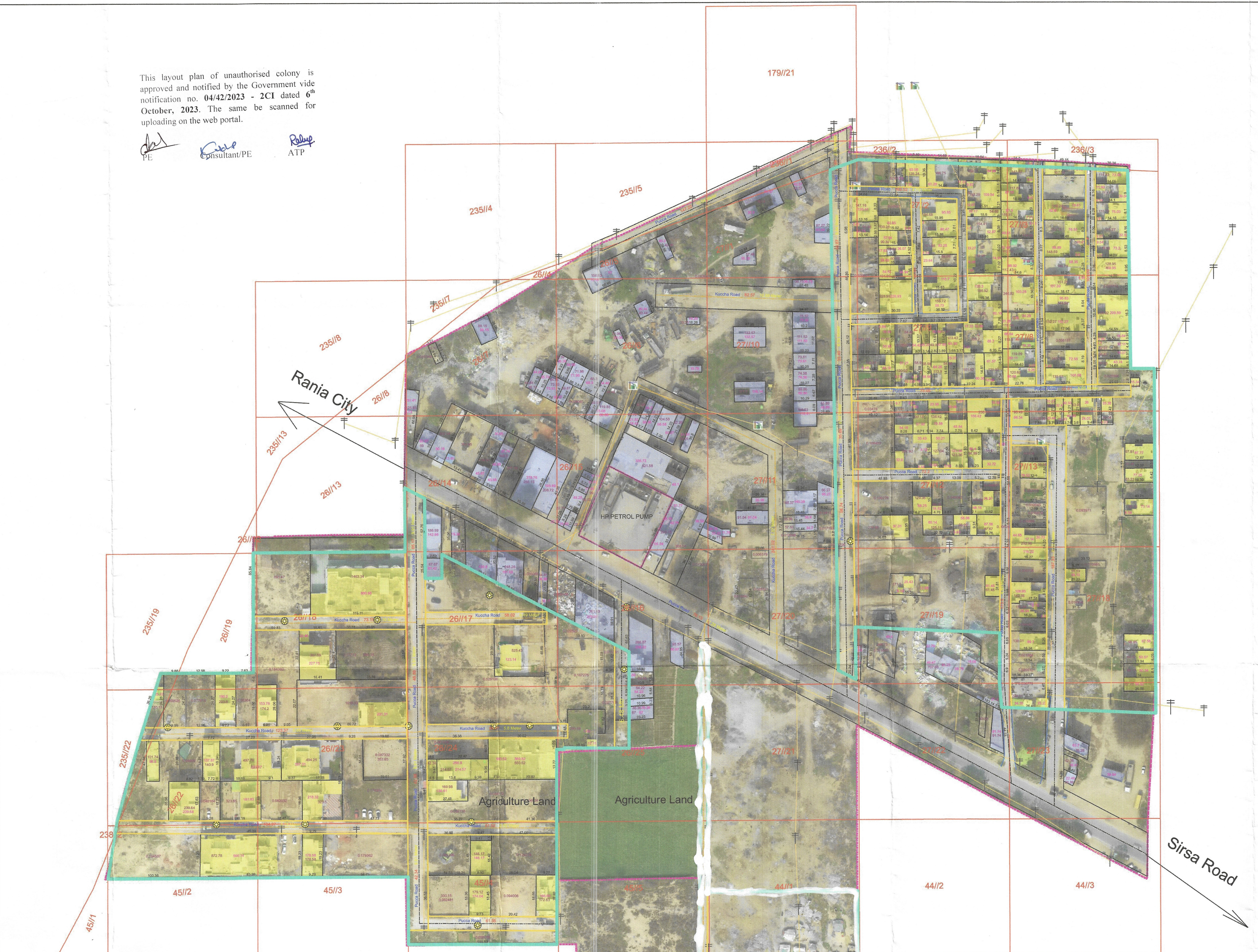


This layout plan of unauthorised colony is approved and notified by the Government vide notification no. 04/42/2023 - 2C1 dated 6<sup>th</sup> October, 2023. The same be scanned for uploading on the web portal.

*[Signatures]*  
 PE, Consultant/PE, ATP



Sr. No.	Parameter Name	Description			
1	Colony name	Badshah Bathia Colony (Rania - UC-05)			
2	Area	16.07 Acres 65,044.54 Sq.M			
3	Location of the colony	Near Anaj Mandi Rania			
4	Municipal Limits Boundary (MC STATUS):	(i) Within MC	Yes		
		(ii) Outside MC	No		
		(iii) Partial MC	No		
5	Type of Colony and use (in %)	Area (%)	Area(Acres)	Area(Sq/M)	
		Residential	33.17	5.33	21,576.04
		Vacant + Open	48.30	7.76	31,414.08
		Road	18.53	2.98	12,054.42
		Commercial	0	0	0
		Industrial	0	0	0
6	Name of Revenue Estate	Rania / Abholi			
7	District Name	Sirsa			
8	Name of Controlled Area	MC Rania			
9	Urban Area	Rania			
10	Year of establishment	2003			
11	Total No. of Plots	195			
12	No. of Constructed Plots (Residential+Commercial+Industrial)	136+0+135			
13	Number of vacant plots	60			
14	Number of families residing in the colony	135			
15	Does the colony have street light?	Yes			
16	Does the colony have Electric Line	Yes			
17	Does the colony have HT Line	No			
18	Does the colony have water supply through pipelines?	Yes			
19	Does the colony have underground sewerage facility?	Yes			
20	Does the colony have Park or Open space	No			
21	Road type on Colony (Kuccha/Pucca)	Kuccha & Pucca			
22	Different roads (in meters)	Road Width	Length (in mtrs)		
		Pucca Road	4.29 M to 8.94 M	1,384 Mtr	
	Kuccha Road	5.08 M to 6.19 M	401 Mtr		
23	Minimum Road Width	4.19 Mtr			
24	Area of the community site(in acres)	No			
25	Is the RWA registered	Yes			
26	Additional Information, if any	No			
27	Name of Electric Substation	Rania			



### LEGEND

- Airport
- Electric Pole
- Hospital
- Man Hole
- Mobile Tower
- Mosque
- School/College
- Solar Pole
- Street Light
- Temple
- Transformer
- HT Line
- LT Line
- Kuccha Road
- Pucca Road
- Major Road Line
- Drainage
- Sewerage Storm water
- Kuccha Road Polygon
- Pucca Road Polygon
- Residential
- Commercial
- Industrial
- Plot Boundary
- Vacant Land
- Park
- Colony Boundary
- Khasra Boundary
- Revenue Estate Boundary
- Mustil Boundary
- District Boundary

**KHASRA No. :**

**RANIA** - 235 // 19 min, 22 min

**ABHOLI** - 26 // 16 min, 17 min, 18, 19 min, 22, 23, 24, 25 min  
 - 27 // 1 min, 2, 3 min, 8 min, 10 min, 11 min, 12, 13 min,  
 18 min, 19 min, 20 min, 22 min, 23 min  
 - 45 // 2 min, 3 min, 4 min

C.A.  
Sanku B.I.

**CHECKED AND VERIFIED BY:**

*[Signatures]*  
 Tehsildar Rania (Sirsa), Municipal Engineer Municipal Committee Rania, Secretary Municipal Committee Rania (Sirsa), Building Inspector Municipal Committee Rania, District Municipal Commissioner, Sirsa

DRG. NO D.T.P. (S)	DT.
LAYOUT PLAN CHECKED AND VERIFIED AT SITE BY	
PATWARI :- <i>[Signature]</i>	
FIELD INVESTIGATOR :- <i>[Signature]</i>	
JUNIOR ENGG.:-	
ASSISTANT DRAFTSMAN :- <i>[Signature]</i>	
DISTRICT TOWN PLANNER :- <i>[Signature]</i>	
SENIOR TOWN PLANNER :-	
OFFICE OF DISTRICT TOWN PLANNER , SIRSA TOWN & COUNTRY PLANNING DEPTT, HARYANA	

**NOTE:-**

- ALL DIMENSIONS ARE IN METERS AND AREA IN SQUARE METERS.
- AREA OF RESIDENTIAL BUILDINGS IS INDICATED THROUGH PINK COLOUR.
- AREA OF PLOT BOUNDARY IS INDICATED THROUGH PURPLE COLOUR.

**SCALE : 1 CM = 10 M**

**DRONE SURVEY AND LAYOUT PLAN PREPARED BY:-**

CHECKED :	SURVEYOR :	SCALE :-
DRAWN BY :-		
DRAWING NO. :- Rania-UC-05	SHT. NO.	REV. NO.