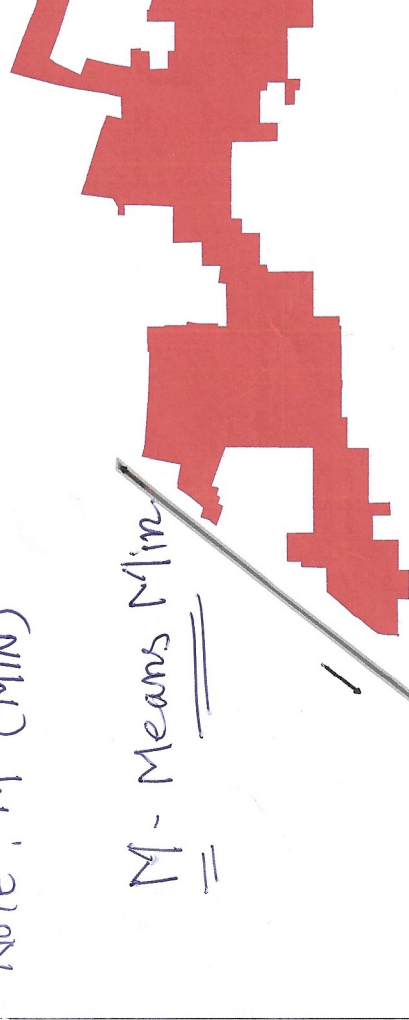


DISTRICT SIRSA

LAYOUT PLAN OF UNAUTHORISED COLONY IN THE REVENUE ESTATE OF VILL/DABWALI TEHSIL DABWALI DISTT. SIRSA

8/6, 1st Floor, Dabwali, Haryana
 17/0, 1st Floor, Dabwali, Haryana
 15/7, 1st Floor, Dabwali, Haryana
 16/12, 1st Floor, Dabwali, Haryana
 17/12, 1st Floor, Dabwali, Haryana
 18/12, 1st Floor, Dabwali, Haryana
 19/12, 1st Floor, Dabwali, Haryana
 20/12, 1st Floor, Dabwali, Haryana
 21/12, 1st Floor, Dabwali, Haryana
 22/12, 1st Floor, Dabwali, Haryana
 23/12, 1st Floor, Dabwali, Haryana
 24/12, 1st Floor, Dabwali, Haryana
 25/12, 1st Floor, Dabwali, Haryana
 26/12, 1st Floor, Dabwali, Haryana
 27/12, 1st Floor, Dabwali, Haryana
 28/12, 1st Floor, Dabwali, Haryana
 29/12, 1st Floor, Dabwali, Haryana
 30/12, 1st Floor, Dabwali, Haryana
 31/12, 1st Floor, Dabwali, Haryana
 32/12, 1st Floor, Dabwali, Haryana
 33/12, 1st Floor, Dabwali, Haryana
 34/12, 1st Floor, Dabwali, Haryana
 35/12, 1st Floor, Dabwali, Haryana
 36/12, 1st Floor, Dabwali, Haryana
 37/12, 1st Floor, Dabwali, Haryana
 38/12, 1st Floor, Dabwali, Haryana
 39/12, 1st Floor, Dabwali, Haryana
 40/12, 1st Floor, Dabwali, Haryana
 41/12, 1st Floor, Dabwali, Haryana
 42/12, 1st Floor, Dabwali, Haryana
 43/12, 1st Floor, Dabwali, Haryana
 44/12, 1st Floor, Dabwali, Haryana
 45/12, 1st Floor, Dabwali, Haryana
 46/12, 1st Floor, Dabwali, Haryana
 47/12, 1st Floor, Dabwali, Haryana
 48/12, 1st Floor, Dabwali, Haryana
 49/12, 1st Floor, Dabwali, Haryana
 50/12, 1st Floor, Dabwali, Haryana
 51/12, 1st Floor, Dabwali, Haryana
 52/12, 1st Floor, Dabwali, Haryana
 53/12, 1st Floor, Dabwali, Haryana
 54/12, 1st Floor, Dabwali, Haryana
 55/12, 1st Floor, Dabwali, Haryana
 56/12, 1st Floor, Dabwali, Haryana
 57/12, 1st Floor, Dabwali, Haryana
 58/12, 1st Floor, Dabwali, Haryana
 59/12, 1st Floor, Dabwali, Haryana
 60/12, 1st Floor, Dabwali, Haryana
 61/12, 1st Floor, Dabwali, Haryana
 62/12, 1st Floor, Dabwali, Haryana
 63/12, 1st Floor, Dabwali, Haryana
 64/12, 1st Floor, Dabwali, Haryana
 65/12, 1st Floor, Dabwali, Haryana
 66/12, 1st Floor, Dabwali, Haryana
 67/12, 1st Floor, Dabwali, Haryana
 68/12, 1st Floor, Dabwali, Haryana
 69/12, 1st Floor, Dabwali, Haryana
 70/12, 1st Floor, Dabwali, Haryana
 71/12, 1st Floor, Dabwali, Haryana
 72/12, 1st Floor, Dabwali, Haryana
 73/12, 1st Floor, Dabwali, Haryana
 74/12, 1st Floor, Dabwali, Haryana
 75/12, 1st Floor, Dabwali, Haryana
 76/12, 1st Floor, Dabwali, Haryana
 77/12, 1st Floor, Dabwali, Haryana
 78/12, 1st Floor, Dabwali, Haryana
 79/12, 1st Floor, Dabwali, Haryana
 80/12, 1st Floor, Dabwali, Haryana
 81/12, 1st Floor, Dabwali, Haryana
 82/12, 1st Floor, Dabwali, Haryana
 83/12, 1st Floor, Dabwali, Haryana
 84/12, 1st Floor, Dabwali, Haryana
 85/12, 1st Floor, Dabwali, Haryana
 86/12, 1st Floor, Dabwali, Haryana
 87/12, 1st Floor, Dabwali, Haryana
 88/12, 1st Floor, Dabwali, Haryana
 89/12, 1st Floor, Dabwali, Haryana
 90/12, 1st Floor, Dabwali, Haryana
 91/12, 1st Floor, Dabwali, Haryana
 92/12, 1st Floor, Dabwali, Haryana
 93/12, 1st Floor, Dabwali, Haryana
 94/12, 1st Floor, Dabwali, Haryana
 95/12, 1st Floor, Dabwali, Haryana
 96/12, 1st Floor, Dabwali, Haryana
 97/12, 1st Floor, Dabwali, Haryana
 98/12, 1st Floor, Dabwali, Haryana
 99/12, 1st Floor, Dabwali, Haryana
 100/12, 1st Floor, Dabwali, Haryana

KEY PLAN



DETAILS OF UNAUTHORISED COLONY

Sr. No.	Parameter Name	Description
1	Colony name	UC-D-01
2	Area	42.28 Acres / 17778.03 Sq/M
3	Location of the colony	Near Sethi Roshan Lal Eye Hospital Nal Dabwali
4	Municipal Limits boundary (MC Status)	(1) Within MC Yes (2) Outside MC No (3) Partial MC No
5	Type of Colony and use (in %)	Residential 88% 21.91 Vacant + Open 10.09% 13.09 Commercial 0% 0.00 Industrial 0% 0.00 Bulkup 0% 0.00
6	Name of Revenue Estate	Dabwali
7	District Name	Sirsa
8	Name of Controlled Area	Dabwali
9	Urban Area	Dabwali
10	Year of establishment	2002
11	Total No. of Plots	1347
12	No. of Constructed Plots (Residential + Commercial + Public/Semi-public + Industrial)	783 + 0 + 0 + 0 = 783
13	Number of vacant plots	564
14	Number of families residing in the colony	783
15	Does the colony have street light?	No
16	Does the colony have Electric Line	Yes
17	Does the colony have H.T. Line	No
18	Does the colony have water supply through pipelines?	Yes
19	Does the colony have underground sewerage facility?	Yes
20	Does the colony have Park or Open space	No
21	Road type on Colony (Kuchha/pucca)	Partial Kuchha/pucca
22	Different roads (in meters)	Road Width Length (in mtrs) Pucca Road 4.00 M 39.58 Kuchha Road 2.20 M to 8.00 M 9627.51 M
23	Minimum Road width	2.2 M
24	Area of the community site(in acres)	No
25	Is the RWA registered	No
26	Additional information, if any	No
27	Name of Electric Sub station	Dabwali

DRG. NO. D.T.P. (S)

LAYOUT PLAN CHECKED AND VERIFIED AT SITE BY

PATWARI :

FIELD INVESTIGATOR :

JUNIOR ENGG. :

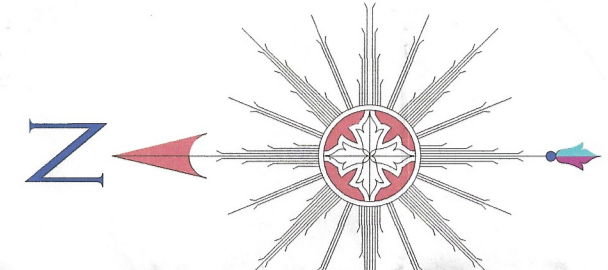
ASSISTANT DRAFTSMAN :

DISTRICT TOWN PLANNER :

SENIOR TOWN PLANNER :

OFFICE OF DISTRICT TOWN PLANNER, SIRSA
TOWN & COUNTRY PLANNING DEPTT., HARYANA

- 140259 10/-
- 8/19 min, 10 min, 11 min, 12 min, 19 min
- 9/16 min, 14 min, 15 min, 16 min, 17, 19, 20, 21, 22, 23 min, 24 min, 25 min
- 10/18 min, 15 min
- 11/25, 14, 5, 6, 7, 8, 9 min, 10 min, 11 min, 12, 13, 14, 15, 16, 17, 18 min, 19 min, 20, 21, 22, 23, 24, 25 min
- 12/18 min, 15 min
- 13/21, 22, 23, 24, 25 min
- 14/12, 3 min, 4 min, 5 min, 6 min, 7, 8, 9, 10, 11, 12, 13, 14, 15, 16, 17, 18 min, 19 min, 20, 21, 22, 23, 24, 25 min
- 15/18, 19, 20, 21, 22, 23, 24, 25 min
- 16/11, 2, 3 min, 4 min, 5 min, 6 min, 7, 8, 9, 10, 11, 12, 13, 14, 15, 16, 17, 18 min, 19 min, 20, 21, 22, 23 min
- 17/18 min, 15 min, 16 min, 17, 18 min, 19, 20 min, 21 min, 22, 23 min
- 18/11, 2, 3 min, 4 min, 5 min, 6 min, 7, 8, 9, 10 min
- 19/12, 3 min, 4 min, 5 min, 6 min, 7, 8, 9, 10, 11, 12 min
- 20/11, 2, 3 min, 4 min, 5 min, 6 min, 7, 8, 9, 10, 11, 12 min
- 21/11, 2, 3 min, 4 min, 5 min, 6 min, 7, 8, 9, 10, 11, 12 min
- 22/11, 2, 3 min, 4 min, 5 min, 6 min, 7, 8, 9, 10, 11, 12 min
- 23/11, 2, 3 min, 4 min, 5 min, 6 min, 7, 8, 9, 10, 11, 12 min
- 24/11, 2, 3 min, 4 min, 5 min, 6 min, 7, 8, 9, 10, 11, 12 min
- 25/11, 2, 3 min, 4 min, 5 min, 6 min, 7, 8, 9, 10, 11, 12 min
- 26/11, 2, 3 min, 4 min, 5 min, 6 min, 7, 8, 9, 10, 11, 12 min
- 27/11, 2, 3 min, 4 min, 5 min, 6 min, 7, 8, 9, 10, 11, 12 min
- 28/11, 2, 3 min, 4 min, 5 min, 6 min, 7, 8, 9, 10, 11, 12 min
- 29/11, 2, 3 min, 4 min, 5 min, 6 min, 7, 8, 9, 10, 11, 12 min
- 30/11, 2, 3 min, 4 min, 5 min, 6 min, 7, 8, 9, 10, 11, 12 min
- 31/11, 2, 3 min, 4 min, 5 min, 6 min, 7, 8, 9, 10, 11, 12 min
- 32/11, 2, 3 min, 4 min, 5 min, 6 min, 7, 8, 9, 10, 11, 12 min
- 33/11, 2, 3 min, 4 min, 5 min, 6 min, 7, 8, 9, 10, 11, 12 min
- 34/11, 2, 3 min, 4 min, 5 min, 6 min, 7, 8, 9, 10, 11, 12 min
- 35/11, 2, 3 min, 4 min, 5 min, 6 min, 7, 8, 9, 10, 11, 12 min
- 36/11, 2, 3 min, 4 min, 5 min, 6 min, 7, 8, 9, 10, 11, 12 min
- 37/11, 2, 3 min, 4 min, 5 min, 6 min, 7, 8, 9, 10, 11, 12 min
- 38/11, 2, 3 min, 4 min, 5 min, 6 min, 7, 8, 9, 10, 11, 12 min
- 39/11, 2, 3 min, 4 min, 5 min, 6 min, 7, 8, 9, 10, 11, 12 min
- 40/11, 2, 3 min, 4 min, 5 min, 6 min, 7, 8, 9, 10, 11, 12 min
- 41/11, 2, 3 min, 4 min, 5 min, 6 min, 7, 8, 9, 10, 11, 12 min
- 42/11, 2, 3 min, 4 min, 5 min, 6 min, 7, 8, 9, 10, 11, 12 min
- 43/11, 2, 3 min, 4 min, 5 min, 6 min, 7, 8, 9, 10, 11, 12 min
- 44/11, 2, 3 min, 4 min, 5 min, 6 min, 7, 8, 9, 10, 11, 12 min
- 45/11, 2, 3 min, 4 min, 5 min, 6 min, 7, 8, 9, 10, 11, 12 min
- 46/11, 2, 3 min, 4 min, 5 min, 6 min, 7, 8, 9, 10, 11, 12 min
- 47/11, 2, 3 min, 4 min, 5 min, 6 min, 7, 8, 9, 10, 11, 12 min
- 48/11, 2, 3 min, 4 min, 5 min, 6 min, 7, 8, 9, 10, 11, 12 min
- 49/11, 2, 3 min, 4 min, 5 min, 6 min, 7, 8, 9, 10, 11, 12 min
- 50/11, 2, 3 min, 4 min, 5 min, 6 min, 7, 8, 9, 10, 11, 12 min
- 51/11, 2, 3 min, 4 min, 5 min, 6 min, 7, 8, 9, 10, 11, 12 min
- 52/11, 2, 3 min, 4 min, 5 min, 6 min, 7, 8, 9, 10, 11, 12 min
- 53/11, 2, 3 min, 4 min, 5 min, 6 min, 7, 8, 9, 10, 11, 12 min
- 54/11, 2, 3 min, 4 min, 5 min, 6 min, 7, 8, 9, 10, 11, 12 min
- 55/11, 2, 3 min, 4 min, 5 min, 6 min, 7, 8, 9, 10, 11, 12 min
- 56/11, 2, 3 min, 4 min, 5 min, 6 min, 7, 8, 9, 10, 11, 12 min
- 57/11, 2, 3 min, 4 min, 5 min, 6 min, 7, 8, 9, 10, 11, 12 min
- 58/11, 2, 3 min, 4 min, 5 min, 6 min, 7, 8, 9, 10, 11, 12 min
- 59/11, 2, 3 min, 4 min, 5 min, 6 min, 7, 8, 9, 10, 11, 12 min
- 60/11, 2, 3 min, 4 min, 5 min, 6 min, 7, 8, 9, 10, 11, 12 min
- 61/11, 2, 3 min, 4 min, 5 min, 6 min, 7, 8, 9, 10, 11, 12 min
- 62/11, 2, 3 min, 4 min, 5 min, 6 min, 7, 8, 9, 10, 11, 12 min
- 63/11, 2, 3 min, 4 min, 5 min, 6 min, 7, 8, 9, 10, 11, 12 min
- 64/11, 2, 3 min, 4 min, 5 min, 6 min, 7, 8, 9, 10, 11, 12 min
- 65/11, 2, 3 min, 4 min, 5 min, 6 min, 7, 8, 9, 10, 11, 12 min
- 66/11, 2, 3 min, 4 min, 5 min, 6 min, 7, 8, 9, 10, 11, 12 min
- 67/11, 2, 3 min, 4 min, 5 min, 6 min, 7, 8, 9, 10, 11, 12 min
- 68/11, 2, 3 min, 4 min, 5 min, 6 min, 7, 8, 9, 10, 11, 12 min
- 69/11, 2, 3 min, 4 min, 5 min, 6 min, 7, 8, 9, 10, 11, 12 min
- 70/11, 2, 3 min, 4 min, 5 min, 6 min, 7, 8, 9, 10, 11, 12 min
- 71/11, 2, 3 min, 4 min, 5 min, 6 min, 7, 8, 9, 10, 11, 12 min
- 72/11, 2, 3 min, 4 min, 5 min, 6 min, 7, 8, 9, 10, 11, 12 min
- 73/11, 2, 3 min, 4 min, 5 min, 6 min, 7, 8, 9, 10, 11, 12 min
- 74/11, 2, 3 min, 4 min, 5 min, 6 min, 7, 8, 9, 10, 11, 12 min
- 75/11, 2, 3 min, 4 min, 5 min, 6 min, 7, 8, 9, 10, 11, 12 min
- 76/11, 2, 3 min, 4 min, 5 min, 6 min, 7, 8, 9, 10, 11, 12 min
- 77/11, 2, 3 min, 4 min, 5 min, 6 min, 7, 8, 9, 10, 11, 12 min
- 78/11, 2, 3 min, 4 min, 5 min, 6 min, 7, 8, 9, 10, 11, 12 min
- 79/11, 2, 3 min, 4 min, 5 min, 6 min, 7, 8, 9, 10, 11, 12 min
- 80/11, 2, 3 min, 4 min, 5 min, 6 min, 7, 8, 9, 10, 11, 12 min
- 81/11, 2, 3 min, 4 min, 5 min, 6 min, 7, 8, 9, 10, 11, 12 min
- 82/11, 2, 3 min, 4 min, 5 min, 6 min, 7, 8, 9, 10, 11, 12 min
- 83/11, 2, 3 min, 4 min, 5 min, 6 min, 7, 8, 9, 10, 11, 12 min
- 84/11, 2, 3 min, 4 min, 5 min, 6 min, 7, 8, 9, 10, 11, 12 min
- 85/11, 2, 3 min, 4 min, 5 min, 6 min, 7, 8, 9, 10, 11, 12 min
- 86/11, 2, 3 min, 4 min, 5 min, 6 min, 7, 8, 9, 10, 11, 12 min
- 87/11, 2, 3 min, 4 min, 5 min, 6 min, 7, 8, 9, 10, 11, 12 min
- 88/11, 2, 3 min, 4 min, 5 min, 6 min, 7, 8, 9, 10, 11, 12 min
- 89/11, 2, 3 min, 4 min, 5 min, 6 min, 7, 8, 9, 10, 11, 12 min
- 90/11, 2, 3 min, 4 min, 5 min, 6 min, 7, 8, 9, 10, 11, 12 min
- 91/11, 2, 3 min, 4 min, 5 min, 6 min, 7, 8, 9, 10, 11, 12 min
- 92/11, 2, 3 min, 4 min, 5 min, 6 min, 7, 8, 9, 10, 11, 12 min
- 93/11, 2, 3 min, 4 min, 5 min, 6 min, 7, 8, 9, 10, 11, 12 min
- 94/11, 2, 3 min, 4 min, 5 min, 6 min, 7, 8, 9, 10, 11, 12 min
- 95/11, 2, 3 min, 4 min, 5 min, 6 min, 7, 8, 9, 10, 11, 12 min
- 96/11, 2, 3 min, 4 min, 5 min, 6 min, 7, 8, 9, 10, 11, 12 min
- 97/11, 2, 3 min, 4 min, 5 min, 6 min, 7, 8, 9, 10, 11, 12 min
- 98/11, 2, 3 min, 4 min, 5 min, 6 min, 7, 8, 9, 10, 11, 12 min
- 99/11, 2, 3 min, 4 min, 5 min, 6 min, 7, 8, 9, 10, 11, 12 min
- 100/11, 2, 3 min, 4 min, 5 min, 6 min, 7, 8, 9, 10, 11, 12 min



29°56'31.90"N 74°43'49.27"E

LEGEND

	Airport
	Electric Pole
	Hospital
	Manhole
	Mobile Tower
	Mosque
	School/College
	Solar Pole
	Street Light
	Temple
	Transformer
	HT Line
	LT Line
	Kuccha Road
	Pucca Road
	Major Road Line
	Drainage
	Sewerage Storm Water
	District Boundary
	Internal Colony Road
	Residential
	Commercial
	Industrial
	Semi Public
	Plot Boundary
	Vacant Land
	Park
	Colony Boundary
	Khasra Boundary
	Mustil Boundary
	District Boundary

NOTE :-
 1. ALL DIMENSION AREA IN METERS AND AREA IN SQUARE METERS.
 2. PINK COLOUR INDICATES UNREGISTERED BUILDINGS IN INDICATED THROUGH
 3. AREA OF PLOT BOUNDARY IS INDICATED THROUGH PURPLE COLOUR.

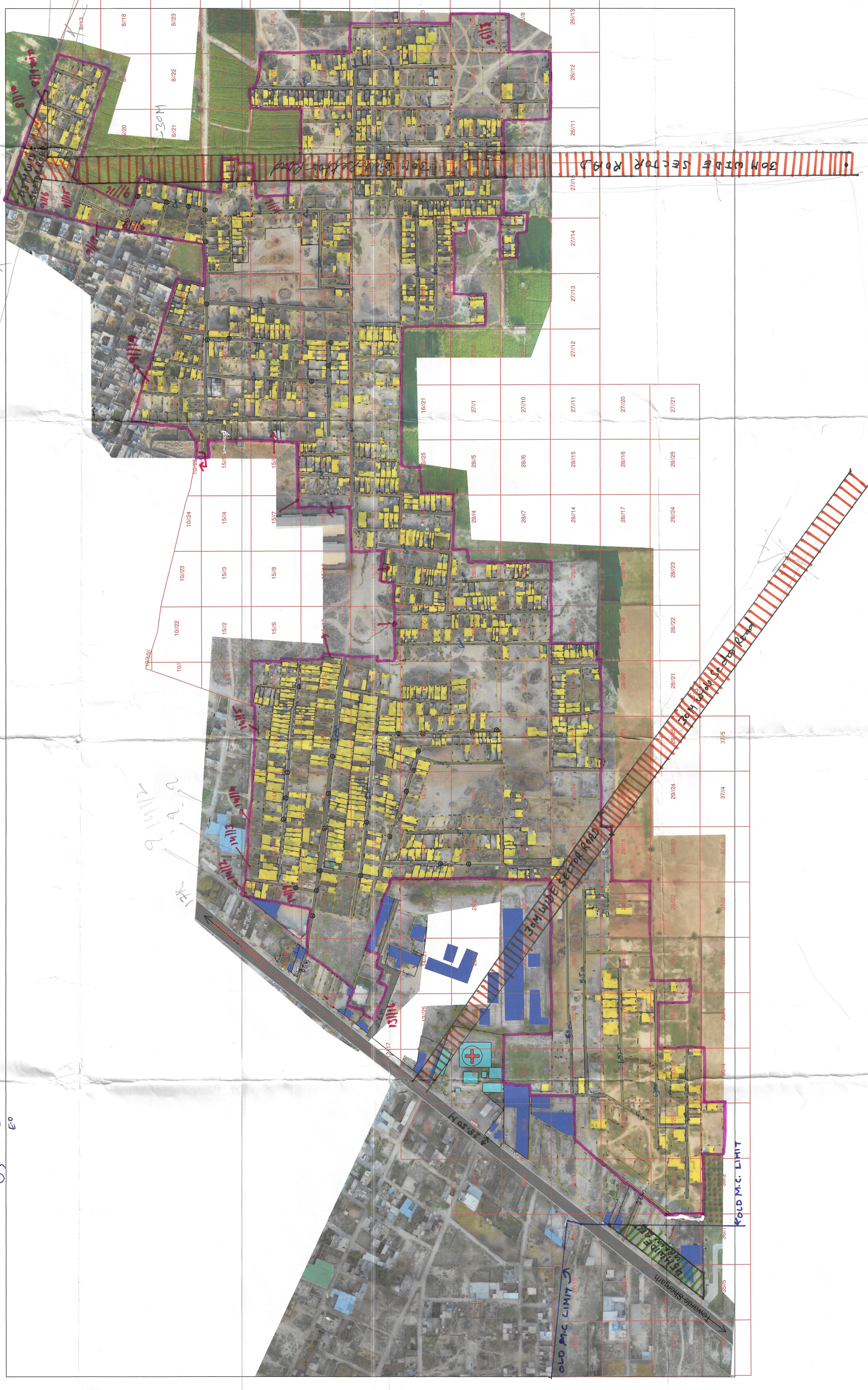
SCALE : 1 CM = 10 M

LAYOUT PLAN PREPARED BY :-

Technifra SOLUTIONS

1st Floor, R.K. Tailor, Old Bus Stand
 Jind Road, Narnaud, Hissar-125009 (India)
 M: +91 9816669711 | Email: landusep.technifra@gmail.com
 Website: http://www.technifra.in

Checked By: _____
 Drawn By: _____
 Drawing No.: U.C.-D-01
 Sheet No.: _____
 Rev. No.: _____



This layout plan of unauthorised colony is approved and notified by the Government vide notification no. 0962/2012 - 4 C issued for the purpose of the layout plan. It is intended for use as a reference for the purpose of the layout plan.

Junior Engineer
M.C. Dabwali

Executive Officer
M.C. Dabwali

District Municipal Commissioner
Sirsa